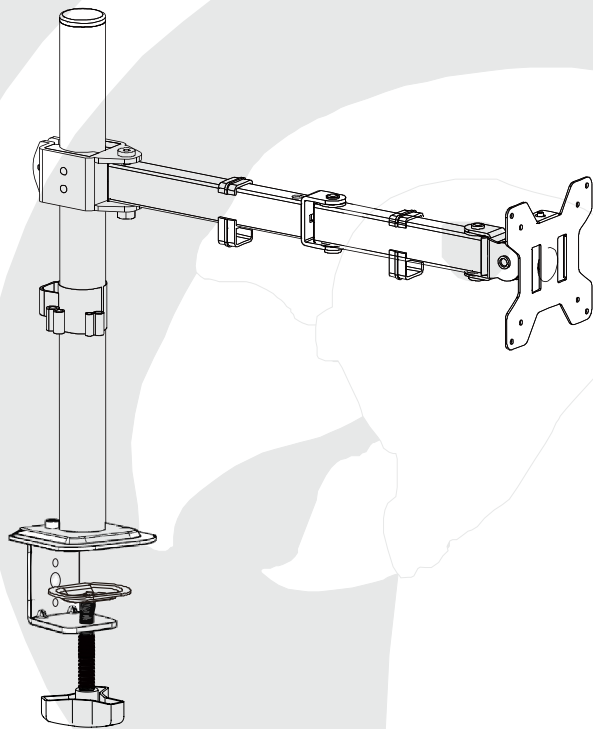




Bracket Monitor Clamp Single Arm Econo - AL6004

User Manual



**Tel: (RSA) 010 140 4900 / Email: sales@parrot.co.za
www.parrot.co.za**

Packaging contents



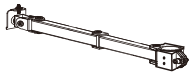
(1) Pole-a



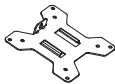
(1) Clamp-b



(1) Clamp Brace-c



(1) Swivel Arm-d



(1) VESA Plate-e



(2)M6X8 Bolt-A



(1)Wire Clip-B



(2)wire Clip-C



(1) Allen Key -D



(4) M4X12 Bolt -E



(4) M4X30 Bolt -F



(4) M8 Spacer-G

Tools Required

Phillips Screwdriver



WARNING

CAUTION!

This monitor desktop mount must be securely attached to the horizontal desk. If the mount is not properly installed it may fall, resulting in possible injury and/or damage.

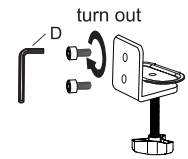
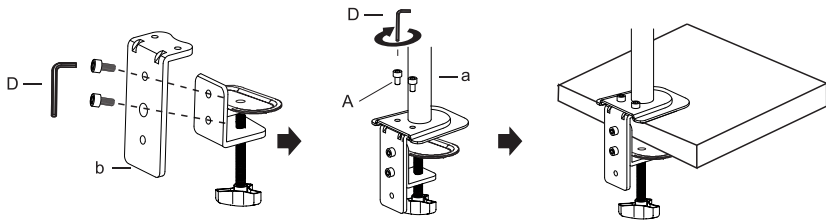
Step 1

Install the Pole to the Desktop

Option A: Desk Clamp Install

OPTION A: Clamp Installation

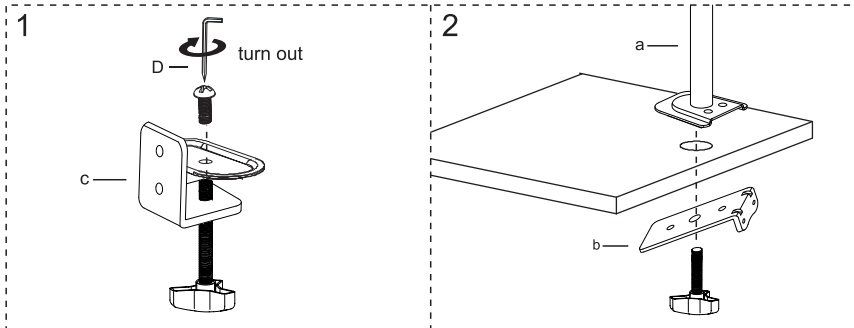
1. Mount Clamp (b) to the bottom of Pole (a) by tightening bolts (A) with 5mm Allen Key (D).
2. Adjust the Clamp width to your desk. Secure stand to the desktop by tightening Clamp (b).



Option B: Grommet Base Install

Existing Grommet Hole Installation

Position pole (a) on the mounting surface and then secure it by tightening the plastic knob after making Bolt through the Bracket, desk hole, and the bottom of Pole (a) sequentially.



Step 1

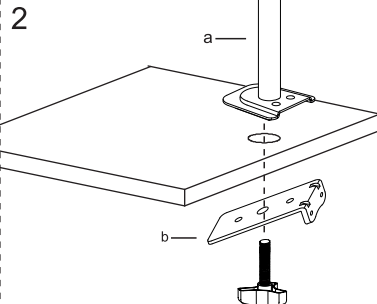
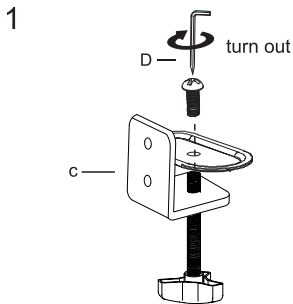
Install the Pole to the Desktop

Option B: Grommet Base Install

Self Drilled Grommet Hole Installation

Position the Pole(a) on the mounting surface and mark the center hole. Drill a 3/8"(10mm) diameter hole at the marked position through the mounting surface.

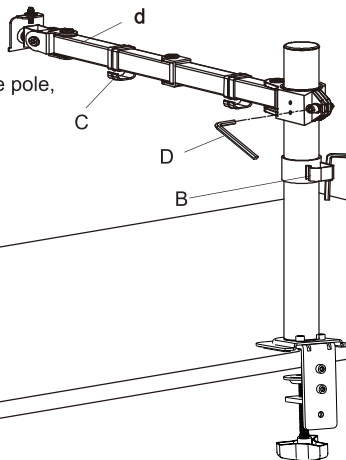
Position pole (a) on the mounting surface and then secure it by tightening the plastic knob after making Bolt through the Bracket, desk hole, and the bottom of Pole (a) sequentially.



Step 2

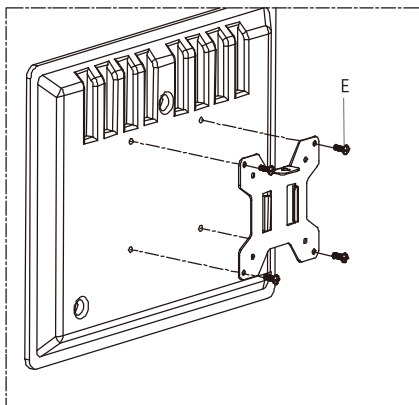
Install Arm to the Pole

Place the Swivel Arm(d) over the pole, and tighten with Allen Key (D)

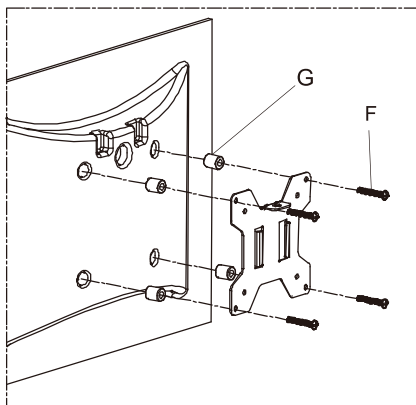


Step 3

Attach the VESA Plate to the Monitor



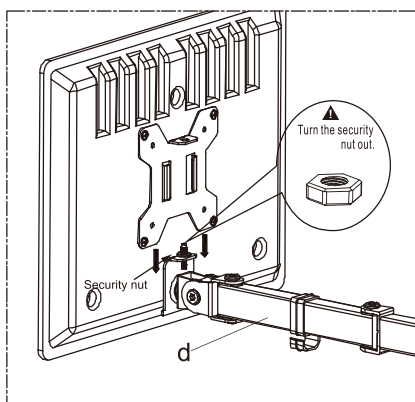
For Monitor with Flat Back



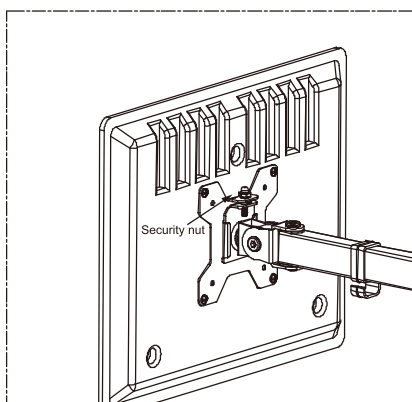
For Monitor with Curved or
Recessed Back

Step 4

Slide the Monitor to the Head of Swivel Arm



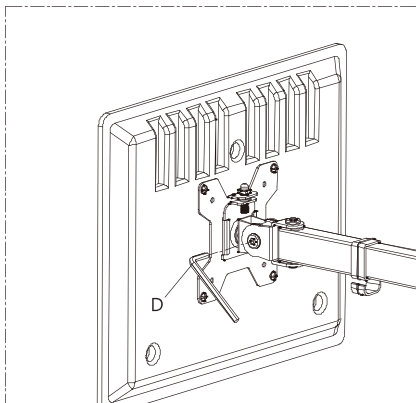
Slide the monitor onto the head of
Swivel Arm(d) as the above diagram.



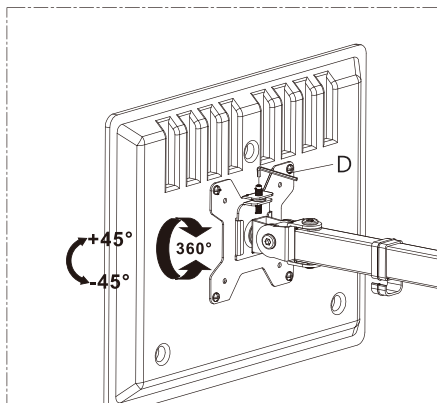
Install the security Nut . Make
sure the security nut is installed
before you rotate the monitor.

Step 5

Make the Necessary Adjustments



Adjust and tighten the bolt with the supplied Allen Key (D) to fix the tilt angle

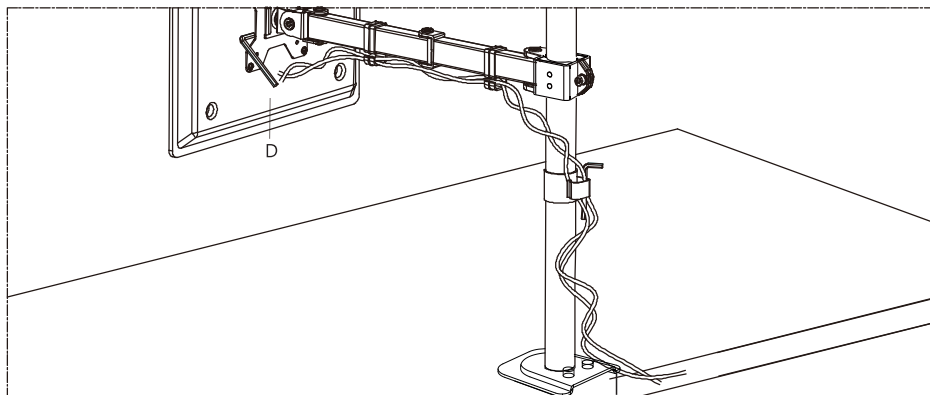


If one monitor is lower, remove the Nut and turn the bolt counter-clockwise with supplied Allen key (D) to raise the monitor. Install the Nut after the adjustment.

Note: Never swivel forward or backward too much, accidental falling might occur.

Step 6

Manage the Wires and Store the Allen Keys on Wire Clip



Thank you for choosing our products!