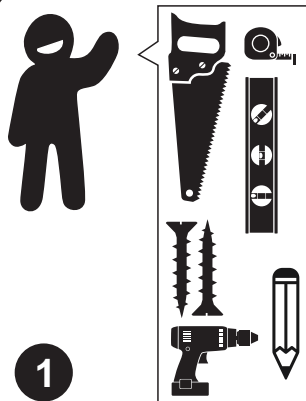




Slatted Wall Panel - A0624

Installation Instructions

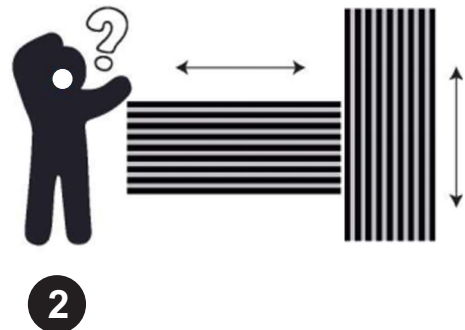


To mount the panel,

you will need the following:

- Skill saw / Fine-toothed blade
- Tape measure
- Spirit level
- Black screws
- Pencil
- Drill

For protection,
use cotton gloves during installation.



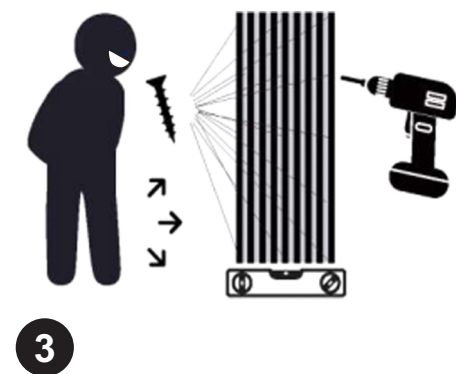
Decide the direction in which

the acoustic panels will be mounted.

Panels can be shortened from the

back using a skill saw or

fine-toothed blade.



Install the panels with black screws
through the polyester into the wall
or the ceiling.

Screws are strategically positioned
left to right at the bottom, middle
and top of each panel.