



Audio Conferencing System 4 Mics & Processor

VC0006
User Manual

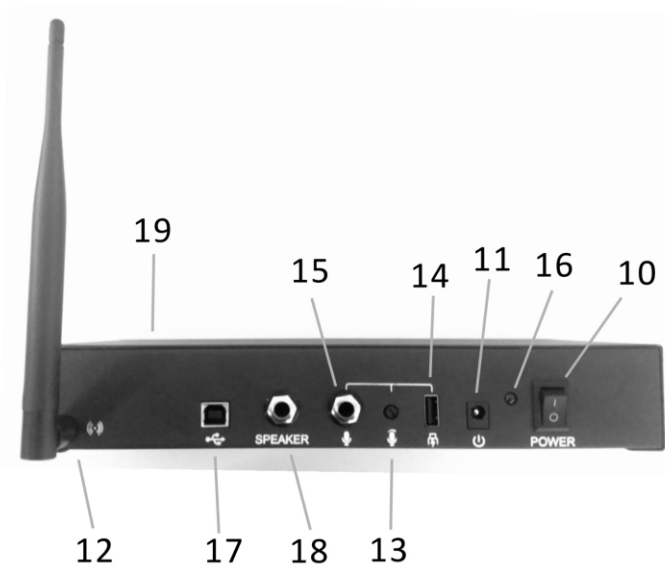


Tel: (RSA) 010 140 4900 / Email: sales@parrot.co.za
www.parrot.co.za

Equipment Overview

This wireless conference system allows for efficient, high-quality audio communication during meetings, lectures, or conferences. It supports USB interface connectivity with computer devices and external audio equipment. Designed for flexible deployment, it supports both directional pickup and sound reinforcement.

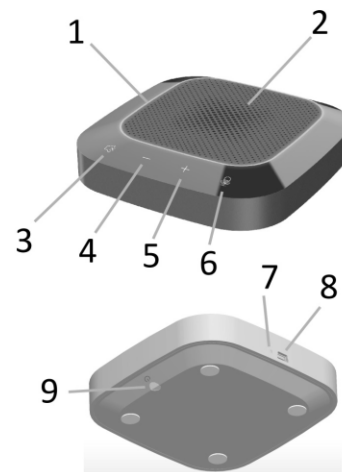
Equipment Introduction



Panel Diagram in Back of the Host

10. Power Switch
11. Volume adjusting knob
12. External antenna port
13. External microphone gain adjustment
14. USB 5V power output port
15. 6.5mm microphone input port
16. Power Indicator
17. Master USB data interface
18. Speaker audio output port
19. Speaker audio output status indicator

1. Slave status ring light
2. Built-in microphone
3. Speaker mute key
4. Volume - key
5. Volume + key
6. Microphone mute key
7. Charging indicator
8. USB charging interface
9. Slave on/off button



Wireless microphone slave

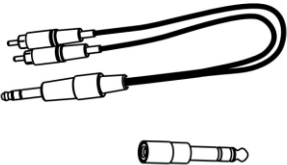
Packing List



Host and external antenna X1



Wireless microphone slave ≅ 4



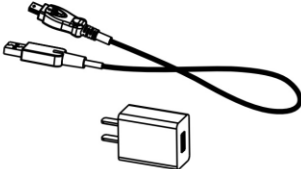
Audio cable and audio adapter X1



Host power adapter X1



Host USB cable X1



Slave power adapters ≅ 4 sets

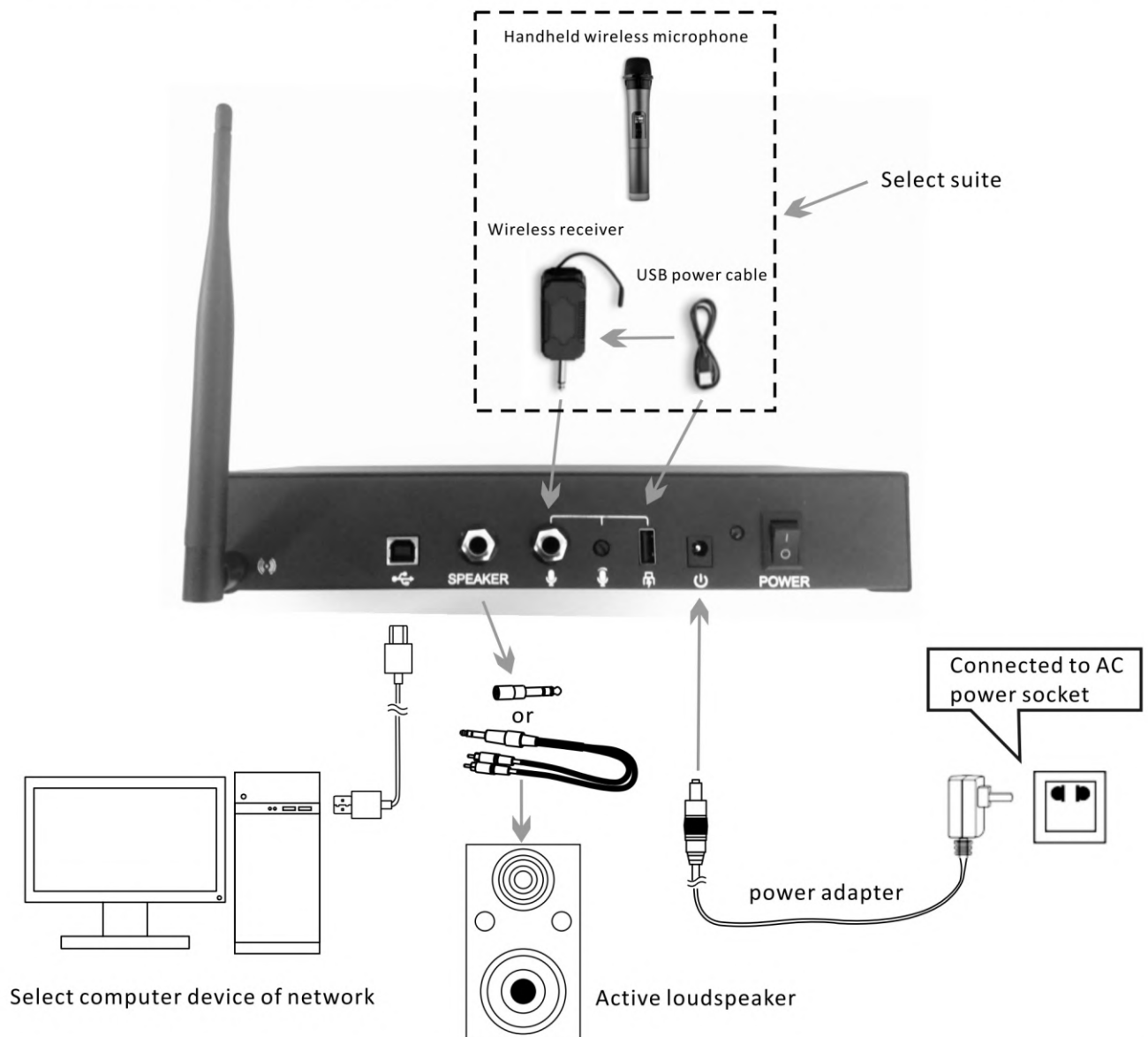


Operating Manual X1

Installation and Connection of Equipment

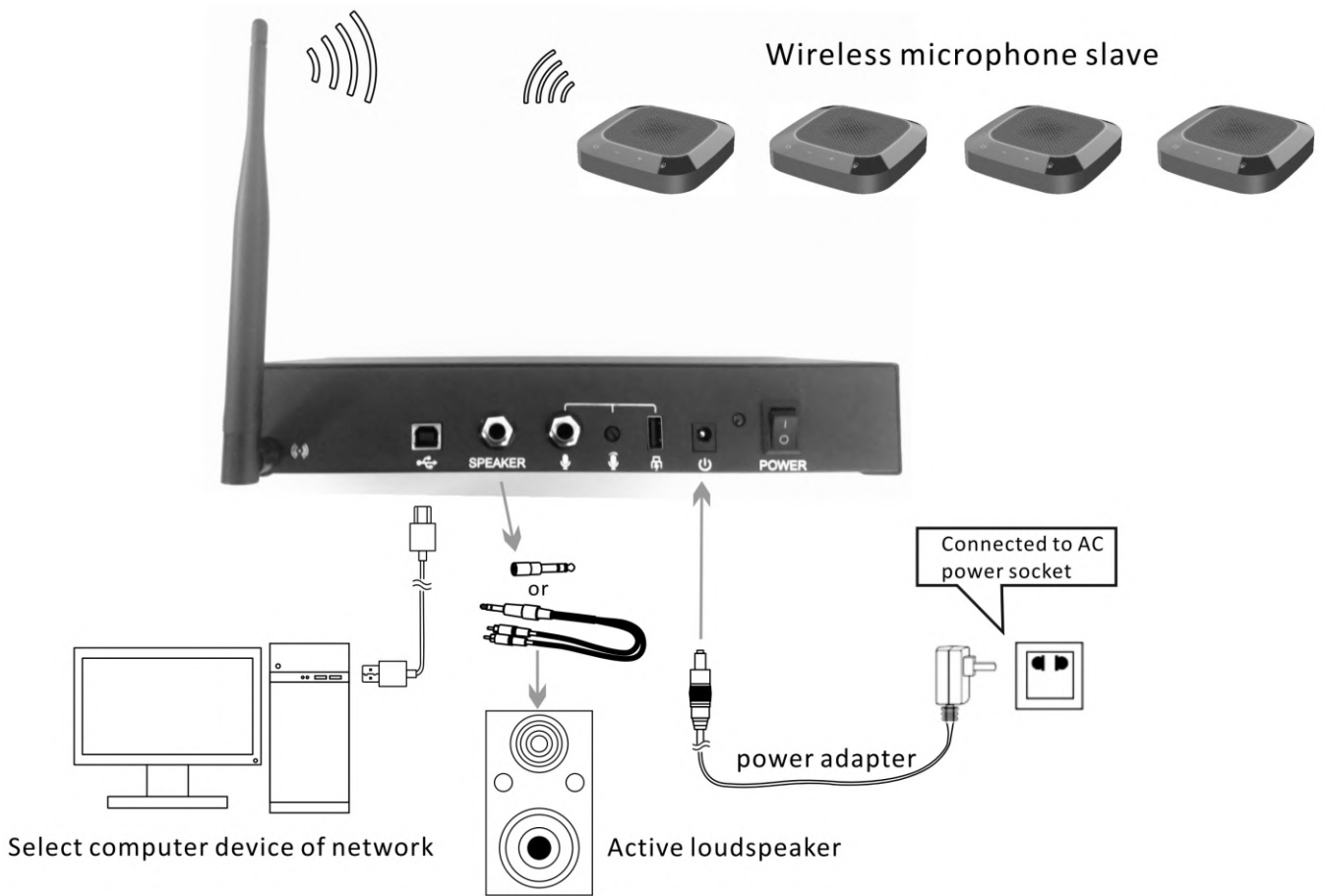
1. As shown in the loudspeaker master diagram, first connect the external antenna. Then, use a USB cable to connect the host device to the computer. Next, insert the plug of the host power adapter into the power input port on the host. Plug the adapter into an AC power outlet, and turn on the host's power button. The power indicator will then light up red.
2. Before use, the wireless microphone slave should be connected with the USB power adapter to fully charge the built-in battery. The slave charging indicator will be on in orange when charging and will be off when the battery is fully charged. When the host is connected wirelessly, the slave ring light flashes in red, indicating low battery and that the battery needs to be charged in time.
3. Long press the slave button until the circular green indicator is on, which means the wireless microphone slave is connected with the host successfully through wireless mode, if this indicator flickers in green it has no wireless connection with the host.
4. The installation distance between the host loudspeaker and wireless microphone slave must be over 2m, the recommended installation distance between wireless microphone slaves is 1.5m

Schematic Diagram for Connection of Host Devices

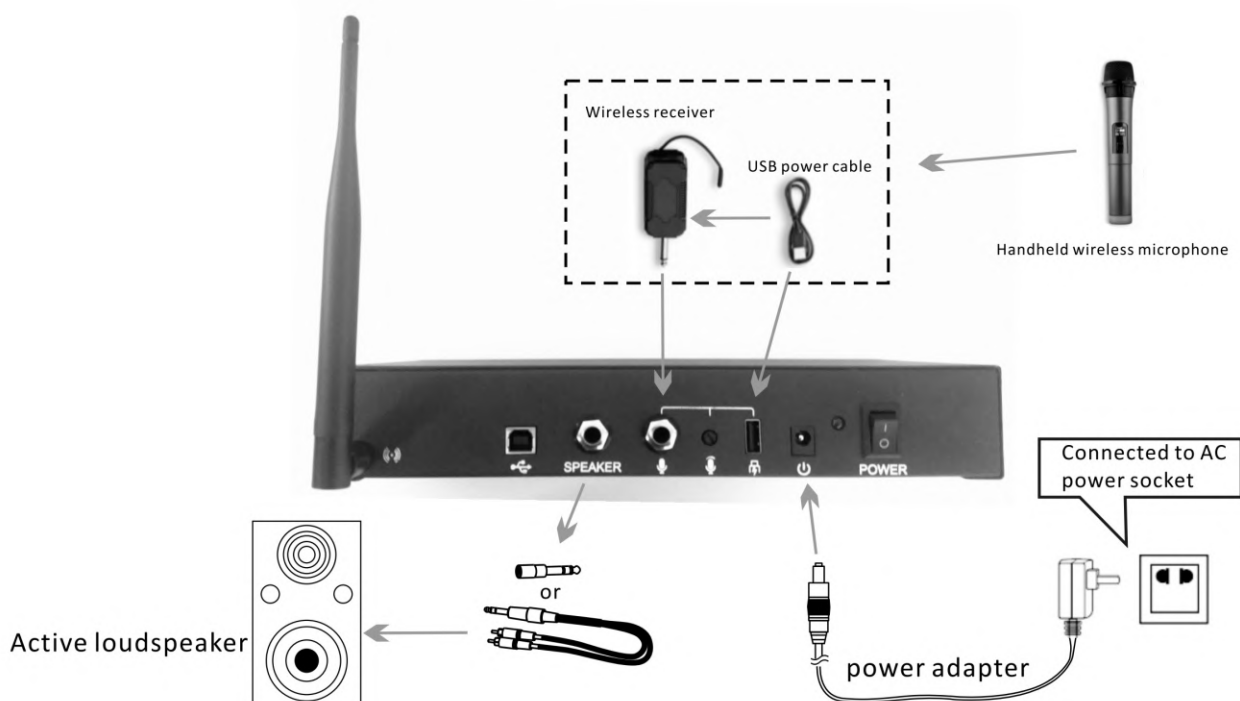


Operation Instructions

1. Main Application Connection Diagram of Net Conference Telephone



2. Connection Diagram of Sound Application in Local Classroom and Meeting Room



Operation Instructions

1. According to the meeting application scenario and requirements for equipment installation, determine the installation locations of the active loudspeaker and wireless microphone. Install the antenna on the host, connect the host to the computer via USB cable, adjust the loudspeaker to a low volume, insert the DC power adapter to supply power, turn on the power switch of the host, and the power indicator will turn red. The indicator of SPEAKER audio output status will turn green by default.
2. Press and hold the on/off button of each wireless microphone slave in turn. When the green light is always on, it means that the slaves have been connected wirelessly to the host.
3. The communication between the remote and local meeting places shall be established through the network instant messaging app (such as: QQ, Skype, etc.) of the computer. In the call process, it is necessary to moderately turn up the volume of the loudspeaker and adjust the sensitivity of the computer microphone so that we can clearly hear the voice of the local and remote meeting places. Then you can proceed to interactions through the network conference telephone.
4. During the call, you can press the "Microphone Mute" button to mute the wireless microphone. At the moment, the ring red light will be always on. You can press the "Microphone Mute" button again to release the mute function and the ring red light will be off.
5. Click the "Speaker Mute" key of the wireless microphone slave during communication, and the indicator of SPEAKER audio output status at the front side will turn red. Click "Speaker Mute" again to recover the voices and the red indicator of the host will turn green again.
6. When the device is used for loudspeaker application in local classrooms and conference rooms, it can be connected with an external microphone with a 6.5mm plug. For example, a handheld wireless microphone suite can be selected and installed according to the connection diagram for local sound amplification. The external microphone gain can be adjusted properly if necessary.

Note: This device is applicable for PCs with Windows and other operating systems. USB interface adopts USB1.1, USB2.0 or above; USB cable is plug-and-play and does not need to install additional driver.

Notes

1. In addition to this device, a network-linked PC cannot be connected with other microphones and loudspeakers at the same time to avoid problems in use.
2. Connect the USB cable of the loudspeaker master directly to the computer device. The use of a USB concentrator for connection will lead to problems in operation.
3. After the device is successfully connected, the default device for playing (output) and recording (input) will display "Model of Local Device" in the sound and audio device properties of the control panel option of the computer device; otherwise, "Model of Local Device" needs to be selected again for confirmation.
4. Keep the built-in battery of the equipment off high temperature and fire sources to avoid explosion risk.
5. Please do not try to repair the equipment, or else it may cause electric shock. If there is a problem and the equipment needs to be repaired, please contact your dealer.

