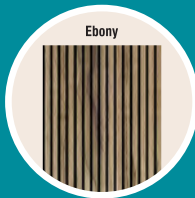


Acoustic Slatted Wall Panels



Creates a cavity for improved sound absorption and is ideal for optimum acoustic performance.

Incorporate warmth & style in any interior space, with these modern new additions.

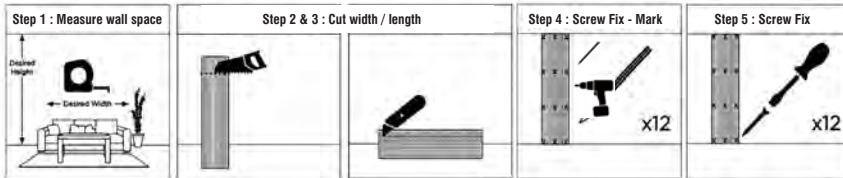


**Ideally used in:
Home offices, Board Rooms, Cinema rooms, etc**

Material	MDF & PET Felt
MDF Thickness	12mm
Felt Thickness	9mm
Panel Size	2400 x 600 x 21mm
Noise Reduction Coefficient	0.60 NRC
Maintenance	Clean the panels with a dust brush, vacuum cleaner, or a tightly wrung cloth

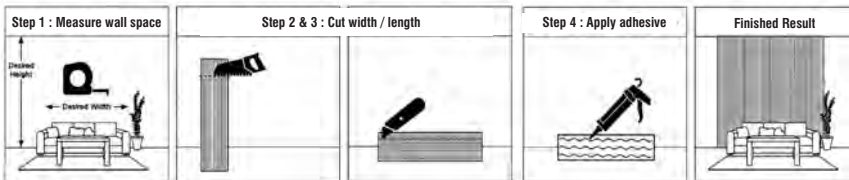
Installation Methods

Option 1 : Visible Fixing



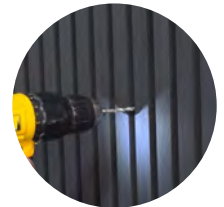
- Step 4 & 5 : Screw Fix**
- Mark drilling locations on slatted panel.
 - Position slatted panel against the wall and drill through each marking into the wall.
 - Insert wall plugs into each mounting hole.
 - Secure with screws.

Option 2 : Adhesive Fixing



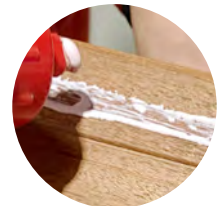
Direct Fastening (Visible fixing)

- The Panels are fastened directly through the acoustic felt into the wall.
- Black or colour matched timber fasteners
- Flat head/countersunk fasteners to be used for aesthetic appeal



Adhesive Fixing (No drilling)

- Types of adhesive examples (Sikaflex, Bostic Contact Adhesive)
- Ensure that the substrate is clean and dry before application.



Mounting on timber battens (Recommended for best acoustic performance)

- Panels are fastened onto horizontal or vertical battens
- Nylon anchors or concrete fasteners are used to secure the battens to the wall

