



## **Graphics Tablet Wired - GT1060P**

### **User Manual**



**Tel: (RSA) 010 140 4900 / Email: [sales@parrot.co.za](mailto:sales@parrot.co.za)  
[www.parrot.co.za](http://www.parrot.co.za)**

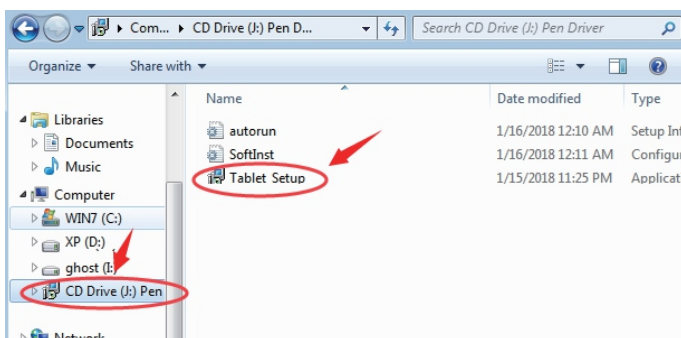
## Connection

Please connect the Graphics tablet to the PC USB 2.0/3.0 port  
(Don't connect to the front USB port of the PC).

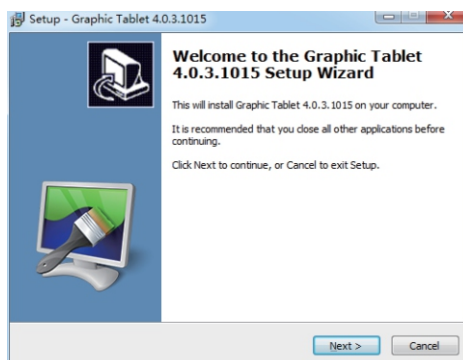


## Driver installation

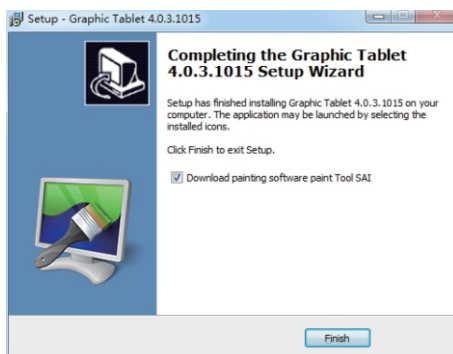
1. After "Connection", Please wait a minute. Then open "My PC" or "MY COMPUTER", find the "Pen Driver" CD-ROM. Open the "Tablet\_Setup.exe" file to run the driver installation.



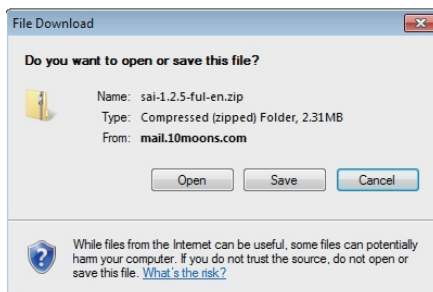
2. Follow the installation wizard step by step to install it.



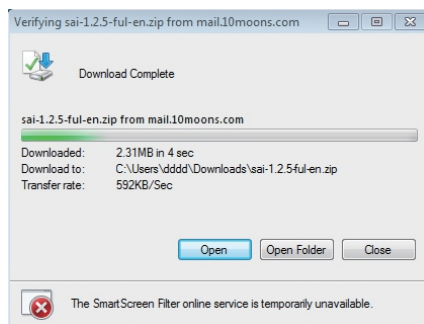
3. In the last wizard page, if you want to download the 'Paint Tool SAI' software, Please Select it, then click 'Finish'.



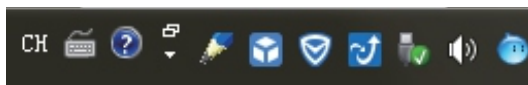
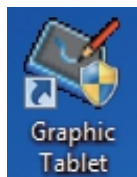
4. Select the Download Path to save it.



5. When the download is completed, Open the sai.exe file then follow the wizard to install it.



6. If the following icons appear on the desktop, it indicates that the driver installation is completed.



## Light Status

The workspace light will light up when the tip of the pen touches the working area or when the key of the pen is pressed in the induction zone.



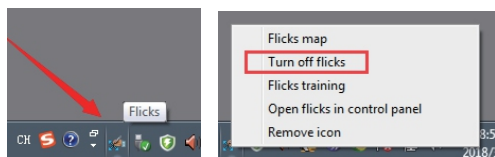
## Key functions

There are 12 programmable keys on the left and 10 media keys on the top of tablet.



## Note

1. Don't use USB HUB or use USB extension cable to connect to PC.
2. If the pen is not used, don't let the pen touch anything and avoid it falling from high places.
3. Please don't use two or more Graphic tablet devices at the same time.
4. In windows 7 system, please turn off flicks.

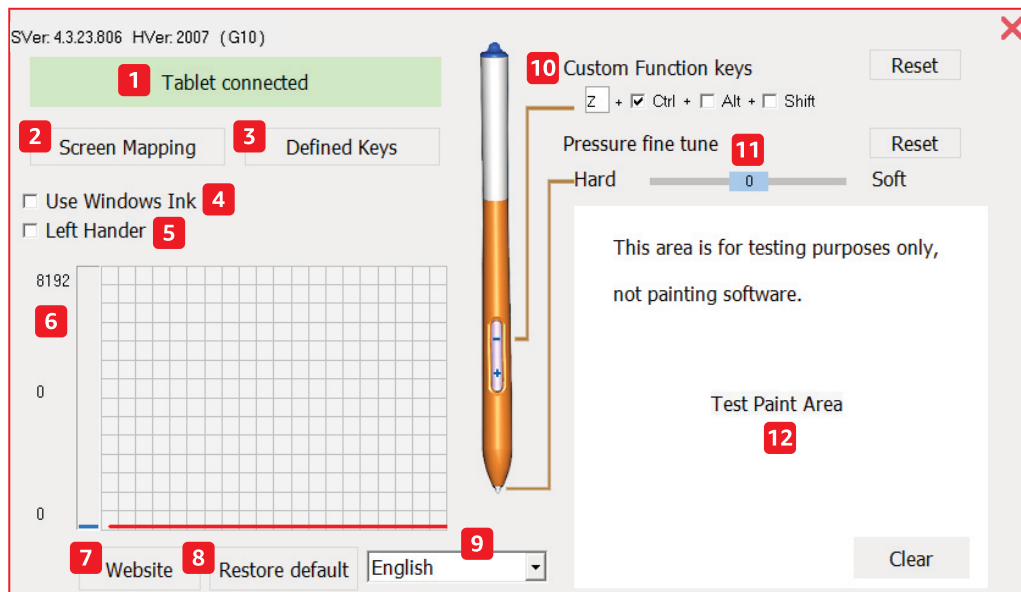


## Pen setting interface

**NOTICE** When using the product with Android™ device, pen/tablet settings cannot be customized.

### For Windows®

Open the “Graphic Tablet” software to customize the settings.

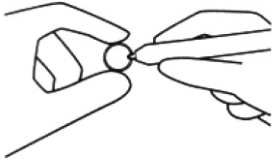


<b>1</b>	To show the connection status.	<b>7</b>	To access this user manual
<b>2</b>	To modify the screen mapping area and the active area of the tablet.	<b>8</b>	To restore default settings.
<b>3</b>	To customize the functions of the shortcut keys on the tablet.	<b>9</b>	To change the language.
<b>4</b>	Tick when using Microsoft Office.	<b>10</b>	To customize the function of the - button on the pen.
<b>5</b>	Tick for left-handed usage.	<b>11</b>	To fine-tune the pen pressure.
<b>6</b>	To show the pressure level.	<b>12</b>	The test paint area for testing the pen pressure.

1. PC and Graphic tablet connection status.
2. Screen Mapping: It can modify the screen mapping area and the graphic tablet work area.
3. Levels Pen Pressure: From 0 to 8192 levels. The curve is used to show the pressure levels, the levels change with the pressure of the pen.
4. Pressure fine tune: Used to adjust the pressure slightly. Default 0.  
Can be used to observe the curve on the left.
5. The key setting of the pen: “-” custom function keys, default Ctrl+z. “+” The fixed function key.  
(For example Right button function of the mouse)
6. Customizable buttons.

## Replace pen nib

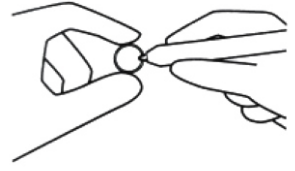
1. Remove the pen nib using the nib removal tool.



2. Insert a new nib.

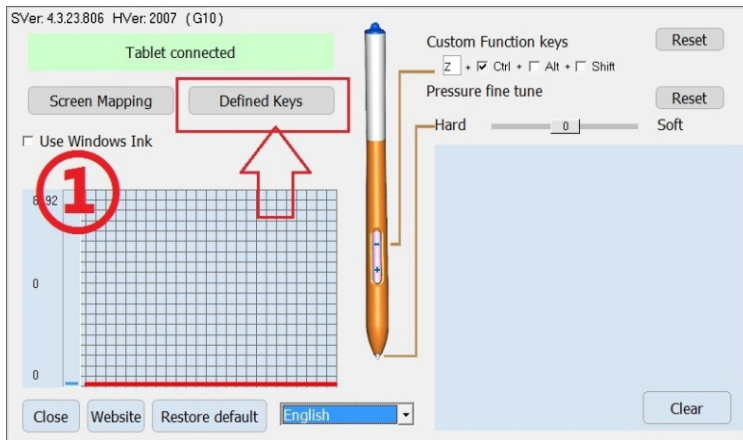


3. Secure it by pushing on it.



## Button Configuration

### 1. Open Driver setting interface; select Defined keys.



① Select the key that you want to customize.

② Use the keyboard to enter the key.

③ Select the Combination key, if needed.

④ Confirm it.

