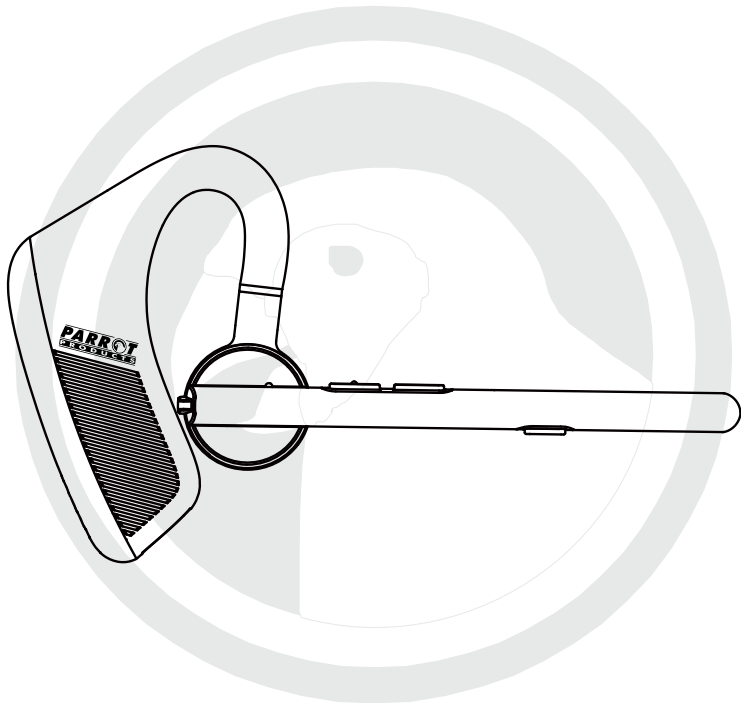




Call Centre Wireless Earset CT4003

User Manual



**Tel: (RSA) 010 140 4900 / Email: sales@parrot.co.za
www.parrot.co.za**

Product Description

CT4003 is a fashionable business wireless earset, which allows a stable connection, high-quality voice calls and clear music listening. The Wireless earset also features up to 24 hours battery life and 60 days standby.

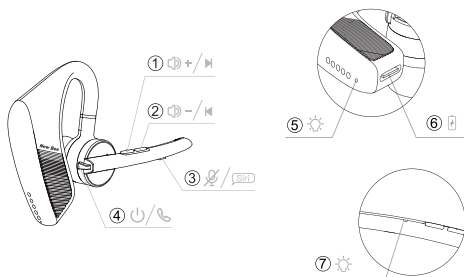
Please be aware, the Bluetooth connection may be interrupted by walls, excessive distance or other electronic interference.

Please read the instruction manual carefully before using the product to ensure correct and safe use.

Included in the box

- 1 x CT4003 Bluetooth Earset
- 1 x USB-C cable
- 1 x Bluetooth Dongle
- 1 x User manual
- 4 x Replacement ear pieces (2 x Silicone & 2 x Sponge)
- 1 x Headset Case

User Instructions



1.Function Keys

1) Plus key “+”

Short press, volume up / long press, skip to next song.

2) Minus key “-”

Short press, volume down / long press, skip to previous song.

3) Microphone mute key

- Calling status: short press to mute the microphone, press again to deactivate the muted status.
- Non-calling status: long press for 3seconds to activate SIRI or audio assistance system.

Earset Restart

When you turn on the earset, the indicator will keep flashing red and blue, which means it is under pairing mode. Hold the MUTE key for 6 seconds until you hear a beep sound, indicating the earset has restarted.

(③ as shown in the picture).

4) ON/OFF switch key ④

- Press and hold for 3 seconds to turn on the earset.
- Press and hold for 4 seconds to turn off when under power on status. (Note: After the earset is turned on, it automatically enters pairing mode after 7 seconds.)
- Incoming calls status: press to receive calls, press and hold for 1second to reject calls.
- Calling status: press to hang up calls.
- Non-calling status: press to play or stop playing music. Double click the key to redial the last call you made.

2. Bluetooth LED Indicator ⑦

- Power on: the light flashes blue once.
- Pairing status: after the headset is turned on, it will automatically enter pairing mode in 7 seconds and keep flashing red and blue alternately.
- Power off: the light flashes red once.
- The lights will be off when the earset is on working status

3. Low battery announcement

A low battery alert will remind every three minutes when the earset should be charged. After the second reminder the earset will automatically power off.

Charging Indicator ⑤, Type - C

Charging Port ⑥

- This product uses lithium-ion polymer batteries. Charge for 3 hours before use (charging voltage: 5V, current: 0.5~2A).
- The charging light is red when charging, it will turn blue when the earset is fully charged.
- When charging, the earset will automatically power off itself.
Do not use the product while charging.

Connecting the Earset to a computer using the Bluetooth Dongle

- (1) Plug the dongle into a USB port in a computer.
On Windows 8.1 / 10 / 11, the computer will most likely recognise the dongle automatically.
- (2) Switch the earset ON. It will automatically enter pairing mode and connect with the bluetooth dongle

Earset Connections

- (1) After the earset is turned on, automatically enters pairing mode after 7 seconds, and the Bluetooth Led indicator will flash red and blue alternately.
- (2) Activate the Bluetooth function of mobile phone or other Bluetooth devices:

For iPhones: open "Settings" > choose "Bluetooth" > turn it "On" > connect "CT4003" .

For Android phones: open "Settings" > choose "Bluetooth" > search for new devices > connect "CT4003" .

NOTE: The contents of the menu may be different for different devices.

- (3) After the "CT4003" is successfully connected to phones or devices, the Bluetooth LED indicator will disappear.

(4) Two phones connection

This earset can connect to two Bluetooth devices together.

Step 1 - Turn on the earset and open Bluetooth function on phone A, connect to "CT4003", then close the Bluetooth function on phone A.

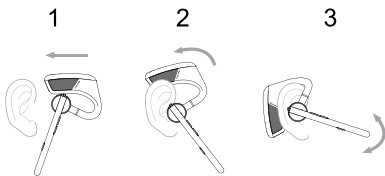
Step 2 - Connect Phone B with "CT4003" as step 1;

Step 3 - Keep Phone B connected, then re-open Bluetooth on Phone A and connect to "CT4003".

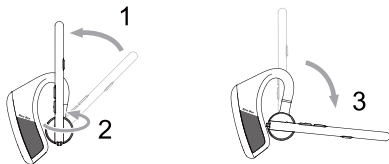
***NOTE:** Although two phones are connected to the earset at the same time, they can only play music from one of them rather than two phones.

Wearing Adjustment

- (1) Slide the earset from above your ear to behind, and then lightly press it toward the ear. Take glasses off before putting on the earsets, so that you can adjust to the most comfortable position.
- (2) Rotate the microphone boom to move the microphone toward your mouth.
- (3) Adjust the microphone up and down to find a more suitable position.



- (4) When alternating the earset between the left and right ear, rotate the microphone boom upwards. This will rotate the direction of the earbud. Then lower the microphone boom down.



Common Problems

- (1) The earset may disconnect when the battery is low. In order not to affect its normal use, please charge the earset in time.
- (2) If the earset fails to turn on, please try to charge it first, and then try to turn it on again after fully charged.
- (3) If the battery is exhausted or has not been used for a long time, there may be no signal light at the beginning of charging.
This will normally light up in red after a few minutes.

- (4) No sound from the earset.

Make sure the Bluetooth earset is turned on.

Make sure the earset is successfully connected to the phone / computer.

Make sure that the distance between the earset and the device does not exceed the effective distance of 10 meters(about 32.8 feet).

Make sure that the music playback output selects the right Bluetooth device

Make sure that your device is within a strong signal range and there is no external interference.

Check whether your phone is connected to other Bluetooth devices.

Make sure that the call selects CT4003 standby status, not the phone or computer speaker status.

- (5) The earset model cannot be searched.

Make sure the earset is in pairing state and ready to connect.

There may be a program error between the earset and phone.

Please restart the device or contact the manufacturer to repair it.

Attention

- A. Using non-original accessories may result in low performance, short circuit, or damage to the earset, which is not covered by warranty.
- B. Disassembling personally may damage the earset and will not be covered by the warranty.
- C. Do not use it in a dusty environment.
- D. Please use a clean, soft, and dry cloth to clean the earset.
- E. Keep the earset in its original packaging when not in use.
- F. Keep kids away from the earset, they may be injured or damage the earset.

- G. Do not put the earset in an extremely hot or cold environment, otherwise, it may be temporarily unavailable. The normal use temperature is between -10°C — 40°C .
- H. Do not submerge this product in water.