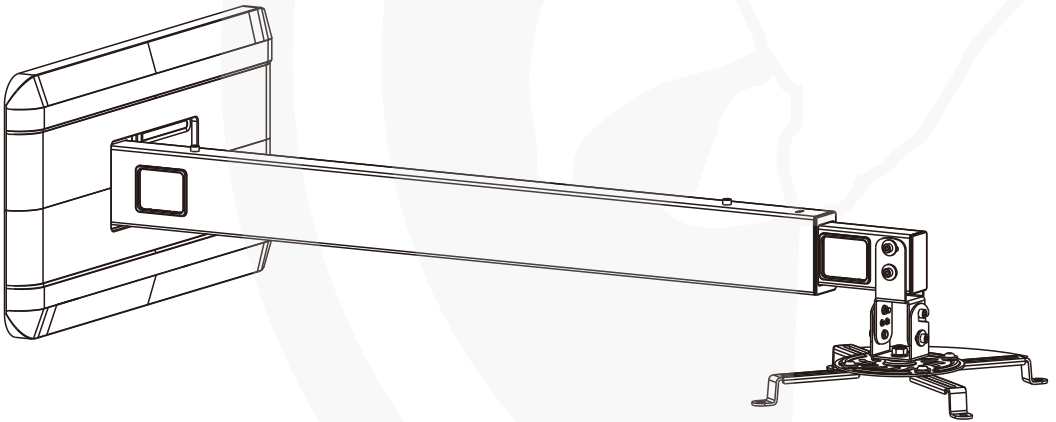




User Manual

OP0344_Wall Mount Bracket Projector
Adjustable 926 - 1518mm



For further information, please visit / contact us on:

Tel: (RSA) 010 140 4900 / Email: sales@parrot.co.za / www.parrot.co.za

Contents

Read the entire user manual before installation & assembling.

Should you have any questions regarding any of the instructions or warnings, please contact us for assistance.

CAUTION:

1. Do not use products heavier than rated weights indicated as this may result in instability and possible injury.
2. Follow assembly instructions as improper installation may result in damage or serious personal injury
3. Safety gear and proper tools must be used - product to be installed by professionals.
4. Install only on solid concrete, masonry and or wood stud walls
5. Make sure that the supporting surface will safely hold the combined weight of the equipment hardware components.
6. Only use provided mounting screws and avoid over tightening the mounting screws.
7. Keep away from children as the product contains small choke hazard items if swallowed.
8. This product is intended for indoor use only - use of the product outdoors could lead to failure & possible injury

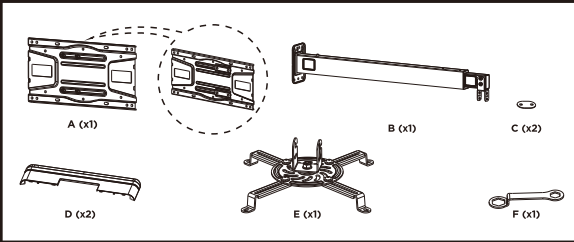
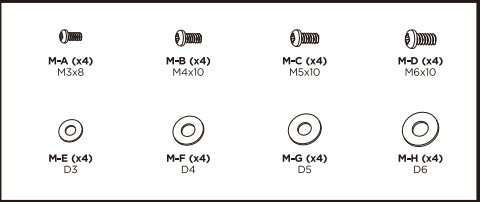

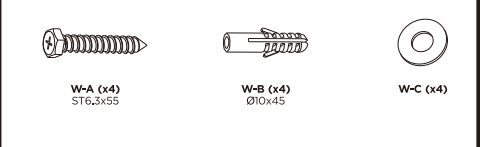
Important:

Ensure that you have received all parts according to the component checklist before installation. If any part is missing or faulty, please contact us.

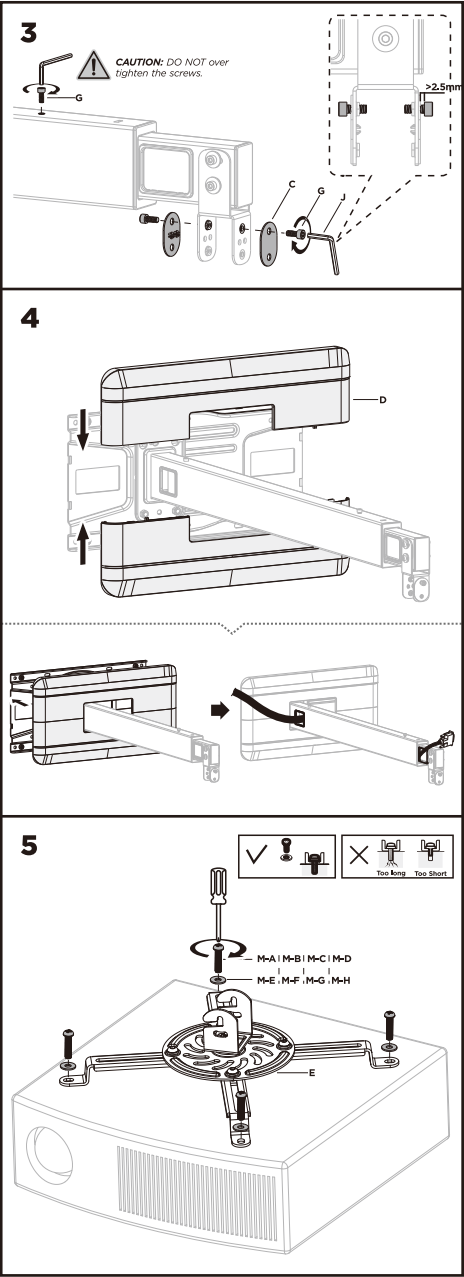
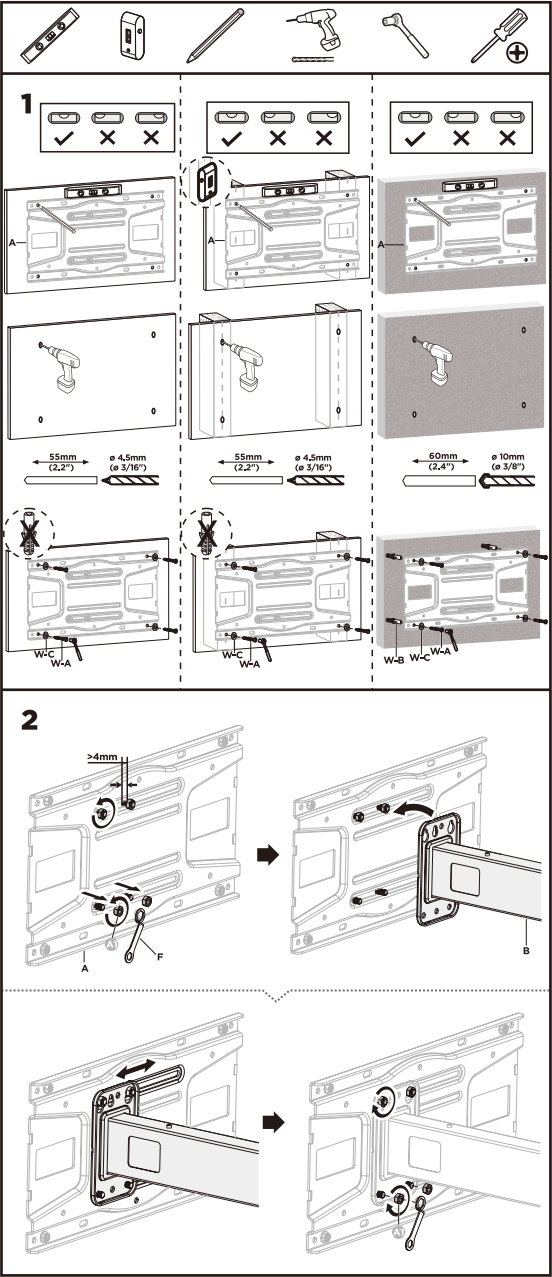
Maintenance:

Check if the product is secure and safe to use at regular intervals (at least every 3 months).

Parts:

Installation



Installation Continued

