

OUR REF: TAP/04/2023/PARROT

ENQUIRIES: SHIKONGENI NTINDA

04TH April 2023

Mr. Sam SHIVUTE
Commissioner
Namibia Revenue Agency
Moltke Street, Windhoek
Namibia

PER EMAIL:

Johanna.Amukushu@namra.org.na

Dear Custom Officials,

TYPE APPROVAL EXEMPTION – PARROT PRESENTATION PRODUCTS (PTY) LTD (NAMIBIA)

Kindly note that the Authority has reviewed the documentations describing equipment to be imported into Namibia by **Parrot Presentation Products (Pty) Ltd (Namibia)** and hereby confirms that, the following models: **CT4003 Bluetooth Ear set, Interactive Flat Panel IP0065, IP0075, IP0086** do not require type approval.

This letter therefore, serves only as an exemption for the equipment mentioned above and may not be used for other consignments without the consent of the Authority.

In light of trade facilitation, the Authority thus requests Customs to please allow the equipment to pass the border as they do not require Type Approval.

Should Customs & Excise have any queries please contact Shikongeni Ntinda at 061-222666 or sntind@cran.na

Yours Sincerely,


EMILIA NGHIKEMBUA
CHIEF EXECUTIVE OFFICER

CC: willbroad.poniso@namra.org.na

CC: abner.david@namra.org.na

CC: Immanuel.Kaeka@namra.org.na

Board Members:

Mr. Heinrich M. Gaomab II (Chairperson); Ms. Vivienne E. Katjuongua (Vice-Chairperson); Mr. Thomas Mbome (Member);
Dr. Tulimevava Mufeti (Member); Mr. Gerhard Coeln (Member); Ms. Dorethy Smit (Member)

Chief Executive Officer: Mrs. Emilia Nghikembua

Governance Executive: Mr. Tanswell Davies





Call Centre Wireless Earset (CT4003)



Earset Technical Specs:

Model name	CT4003
Music playback time	Up to 20 hours
Chipset earphone	QCC 3020
Bluetooth version	V5.2
Operation range	15 - 20m
Standby time	Up to 60 days
Charge time	2 - 3 hours
Battery life	24 hours
Net weight	15.8 g
Working Temperature	-10°C - 60°C
Charging Port	Type - C

- **Bluetooth Earset Version:** QCC V5.2 Support APTX
- **Support Protocol:** Headset, HFP, A2DP, AVRCP HSP
- **Bluetooth Dongle Driver:** REALTEK

Includes:

- 1 x CT4003 Bluetooth Earset
- 1 x USB-C cable
- 1 x Bluetooth Dongle
- 1 x User manual
- 4 x Replacement ear pieces (2 x Silicone & 2 x Sponge)
- 1 x Headset Case



CVC 8.0



Comfortable Wearing



24 Hours Talk Time



Hi-Fi Stereo Sound

Dongle Technical Specs:

Model name	Bluetooth Dongle
Compatibility	Win 8.1, Win 10, Win 11
Chipset	ATS2851
Bluetooth version	V5.3
Support Bluetooth EDR data rate	3Mbps
Operation range	10 - 20m
LED Indication	Power ON, Linking, Standby
Net weight	3 g
Working Temperature	-10 C - 50 C
Storage Temperature	-20 C - 70 C
Product size	25*17*8mm

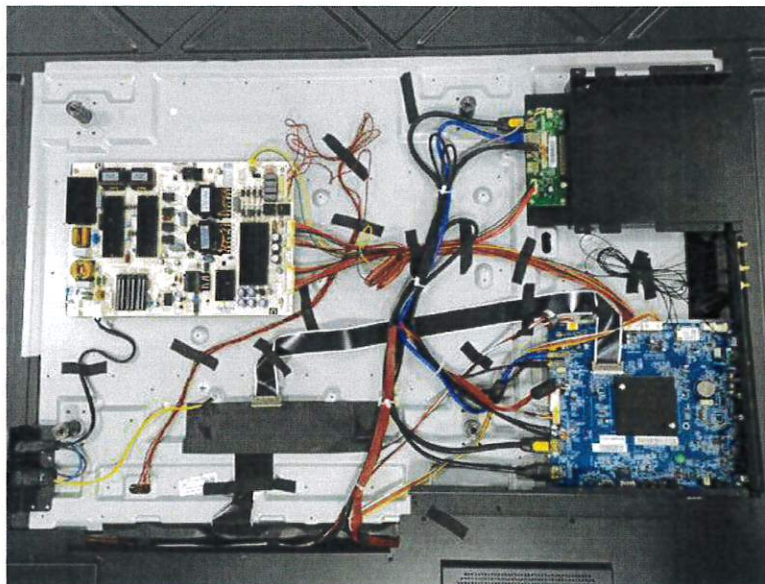


Tel: (RSA) 010 140 4900 / Email: sales@parrot.co.za / www.parrot.co.za

Interactive Flat Panel

Model No.		IP0065	IP0075	IP0086
LED Parameters	Size	65INCH	75INCH	86INCH
	BACK LIGHT	D-LED	D-LED	D-LED
Display Parameters	Active Display Area	1428.48 (H) x 803.52 (V)	1649.74 (H) x 927.94(V)	1895.04 (H) x 1065.96 (V)
	Resolution	3840x2160(pixels,RGB)	3840x2160(pixels,RGB)	3840x2160(pixels,RGB)
	Contrast Ratio	1200: 1	1200: 1	1200: 1
	Brightness	350cd/m2	350cd/m2	350cd/m2
	Display Colors	1.07B(10bit)	1.07B(10bit)	1.07B(10bit)
	Aspect Ratio	16:9	16:9	16:9
	Response time	8ms (typ.)	8ms (typ.)	8ms (typ.)
	Viewing Angle	178°(H) / 178°(V)	178°(H) / 178°(V)	178°(H) / 178°(V)
	Led Life time	50,000 Hrs (min.)	50,000 Hrs (min.)	50,000 Hrs (min.)
	Screen Protecctor	4mm Tempered AG Glass	4mm Tempered AG Glass	4mm Tempered AG Glass
Microphone	Microphone	Support Wireless	Support Wireless	Support Wireless
Speaker	Speaker	8Ω , 15W x2	8Ω , 15W x2	8Ω , 15W x2
	Power(No PC)	≤250W	≤350W	≤ 450W
Power Parameters	Working Voltage	100V~240V AC	100V~240V AC	100V~240V AC
	Standby Power	≤ 0.5W	≤ 0.5W	≤ 0.5W
ANDROID OS	Android System	Android 11		
	RAM and ROM	DDR4 4GB & EMMC 32GB		
	CPU /GPU	Quad Core, A55*4, 1.9Ghz GPU - Mali G52MP2		
	WIFI	802.11ac/b/g/n/a 2.4G (wifi 5/wif i6 for optional) ; with Hotspot 5Ghz +2.4G		
	Bluetooth	Bluetooth 5.0		
Input & Output	UI Resolution	4K		
	Ethernet network	10M/100M/1000M		
	Input (Backside)	RJ45 IN*1; RS232*1; HDMI IN 2.1*2; VGA*1; AUDIO IN *1; Touch (Type B) *1; AV IN*1 ; AV Out *1; USB 2.0*1; USB 3.0*1; SD Card slot * 1 ; ;DP*1; Type C*1		
	OutPut	SPDIF OUT *1 ; AUDIO OUT*1; HDMI Out*1; RJ45 OUT		
	Front Connection	HDMI IN *1 ; TOUCH USB *1 TYP C *1 USB 3.0 *3		
Touch parameters	Touch Technology	Infrared technology (IR)		
	Touch Points	Windows system: 40TOUCH; Android system: 20 TOUCH		
	Inductive objects	Finger or pen		
	Acuracy	Φ 1mm		
	Response time	≤6ms		
Environment	Operation System	Support Windows, Mac, Android , Linux, Chrome		
	Storage & Working	Working Temperature: 0 °C~ 45 °C, Storage Temperature: -20 °C~ 60 °C		
	Temperature storage & working			
	Humidity	10% ~90%		
	physic Size	1490.6*904.8*88.95mm	1712.9*1030.9*89.15mm	1958.9*1169.75*89.15mm
Packing Parameters	Plywood Carton Size	1576*980*200mm	1785*1125*200mm	2040*1260*200mm
	Net Weight	42±1 kg	54±1 kg	69±1 kg
	Gross Weight	56.5±1 kg	69±1 kg	83.8±1 kg

EUT photo 4



9. Photographs of EUT

EUT photo 1

