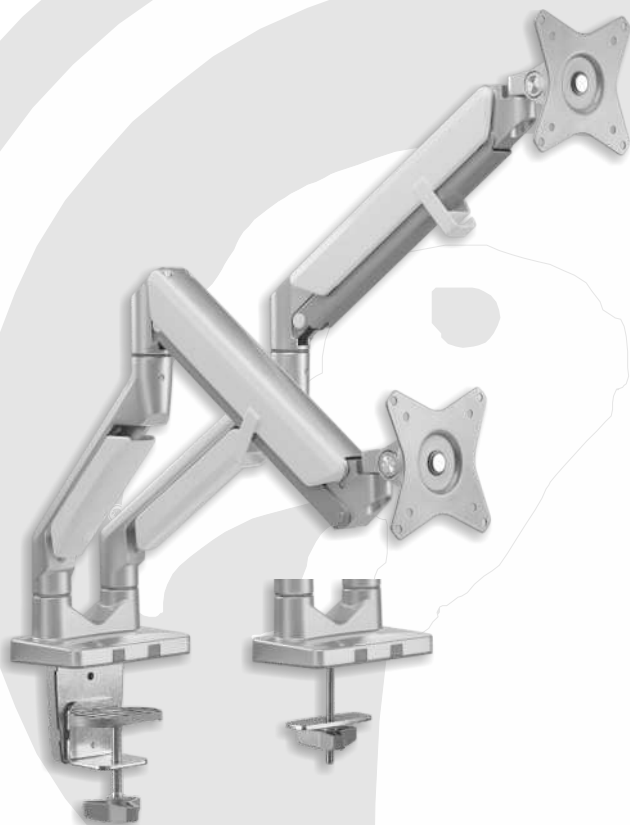




Monitor Clamp Bracket Dual Arm - AL6002

User Manual



**Tel: (RSA) 010 140 4900 / Email: sales@parrot.co.za
www.parrot.co.za**

FEATURES:

- Built-in Spring Tension Gauge: for perfect weight adjustments
- Gas Spring: perfectly counterbalances the weight of your monitor
- Non-skid Silicone Pads: protect your work surface from scratches or scuffs
- Integrated 180° Rotation Stopper
- Weight Capacity: 1 - 9kg per arm

ATTENTION:

Read the entire instruction manual before you start installation and assembly.

CAUTION:

Use with products heavier than the rated weights indicated may result in instability causing possible injury.

Follow the assembly instructions closely. Improper installation may result in damage or serious personal injury.

Safety gear and proper tools must be used. This product should only be installed by professionals.

Make sure that the supporting surface will safely support the combined weight of the equipment and all attached hardware and components.

Use the mounting screws provided and **DO NOT OVER TIGHTEN** mounting screws. This product contains small items that could be a choking hazard if swallowed. Keep these items away from children.

This product is intended for indoor use only. Using this product outdoors could lead to product failure and personal injury.

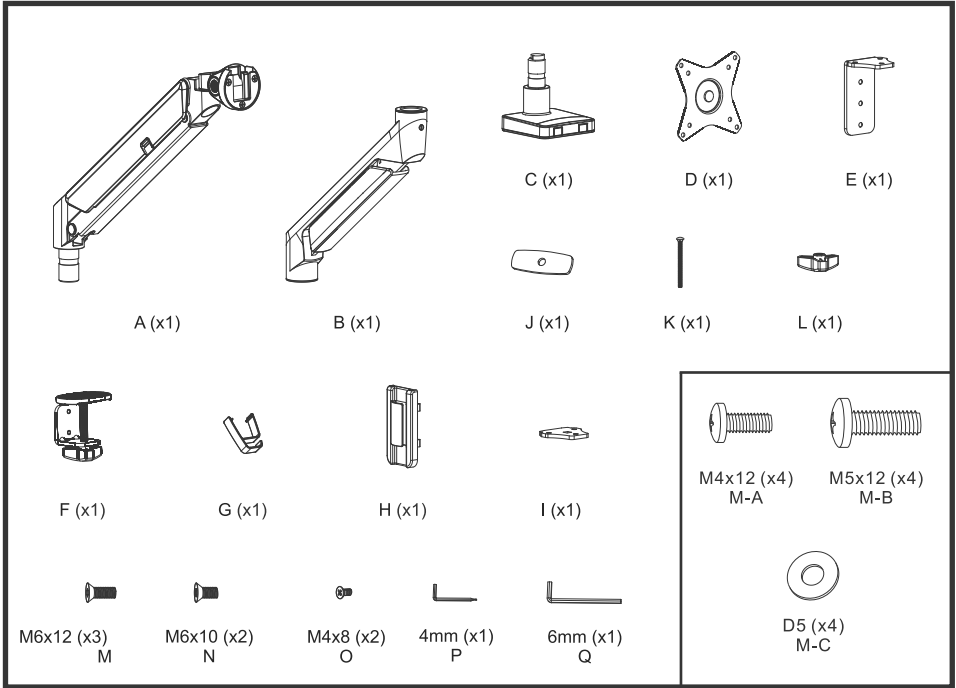
IMPORTANT:

Ensure that you have received all parts according to the component checklist prior to installation. If any parts are missing or faulty, contact your place of purchase for a replacement.

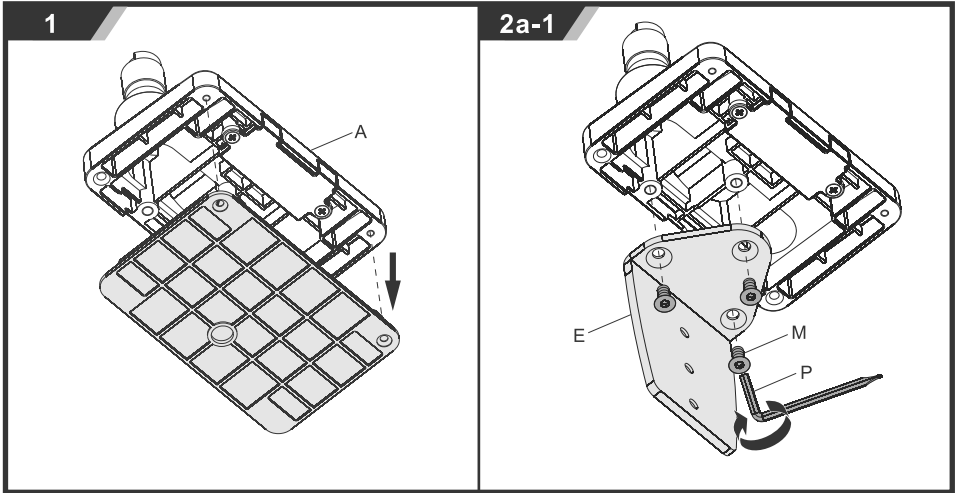
MAINTENANCE:

Check that the product is secure and safe to use at regular intervals (at least every three months).

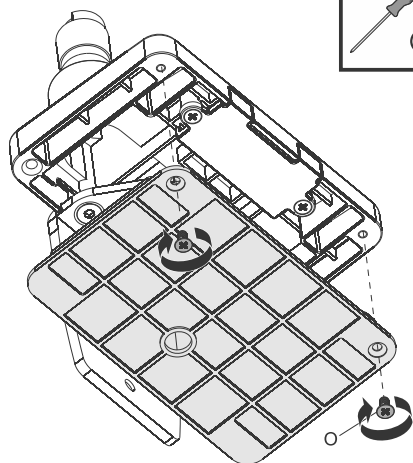
Includes:



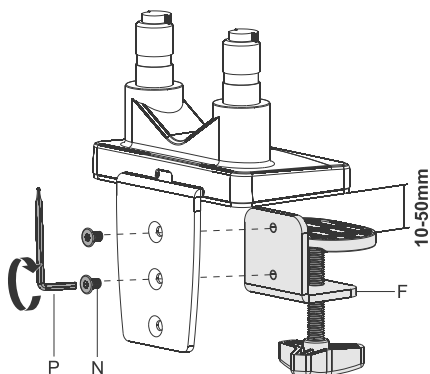
Installation:



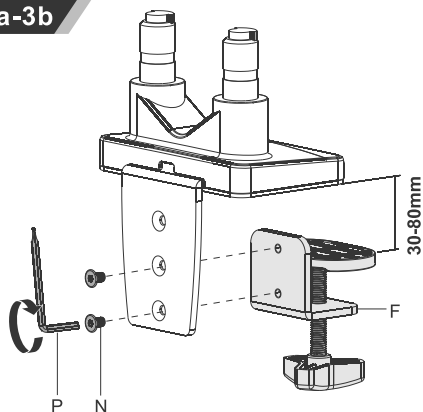
2a-2



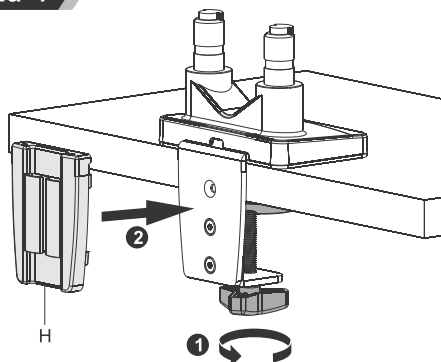
2a-3a



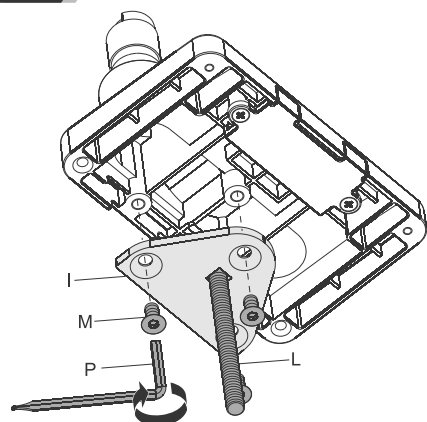
2a-3b



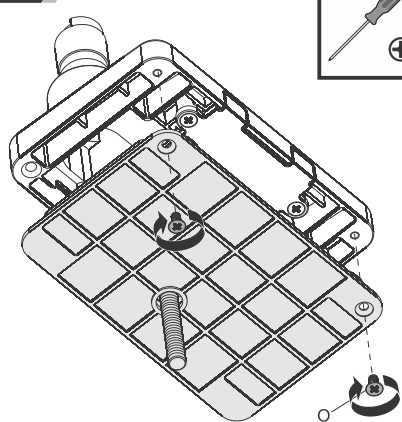
2a-4



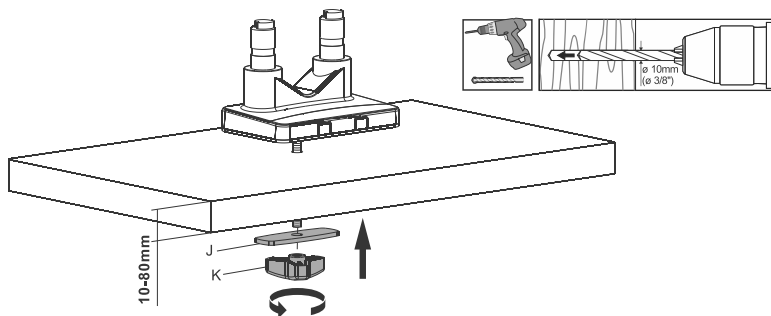
2b-1



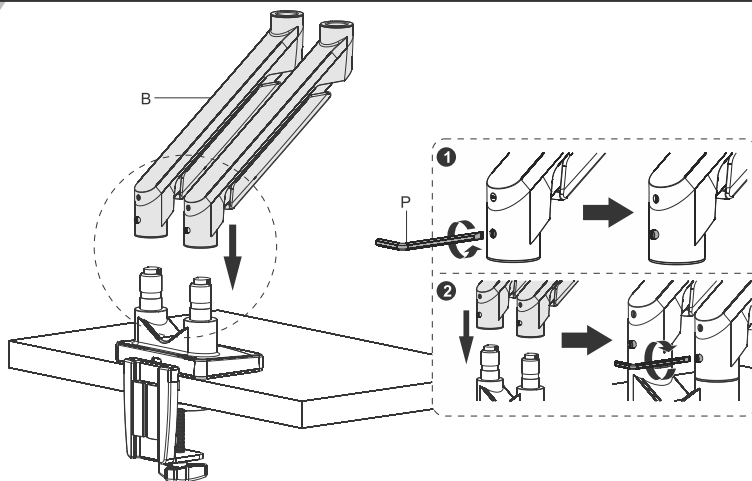
2b-2



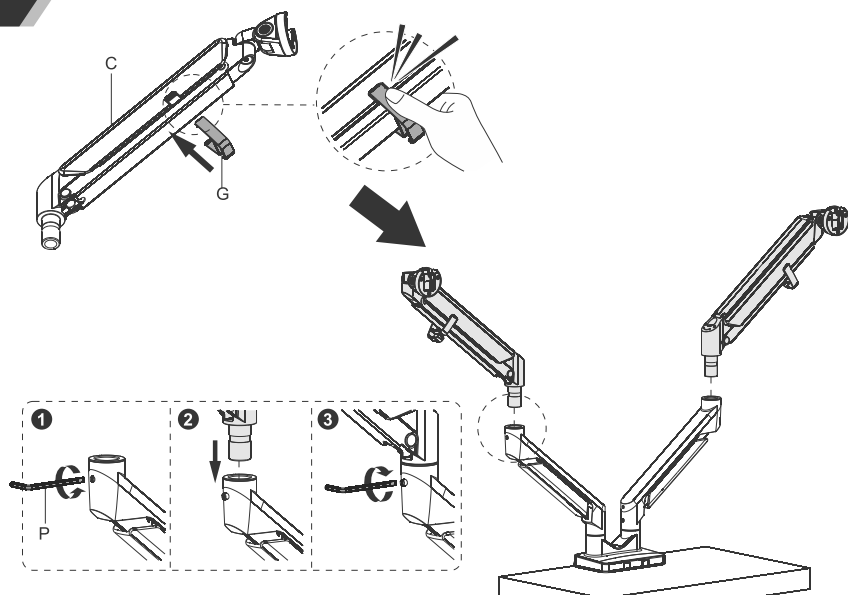
2b-3



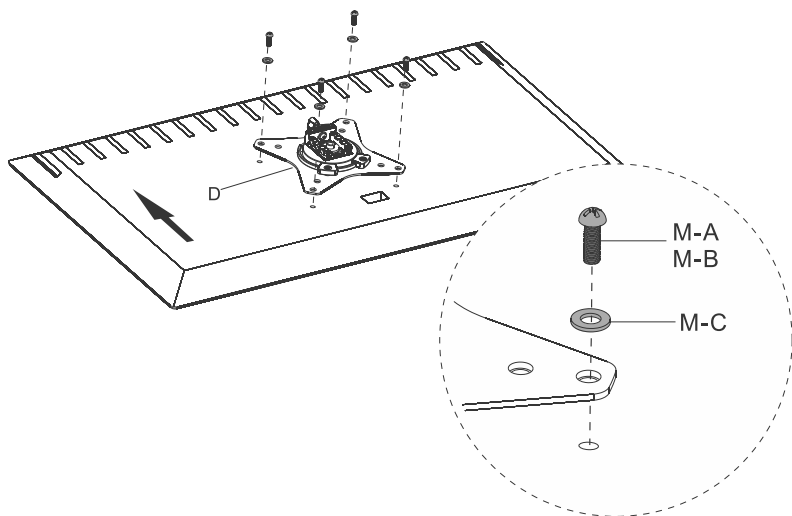
3



4



5

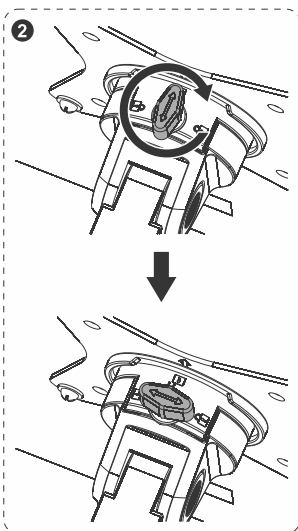
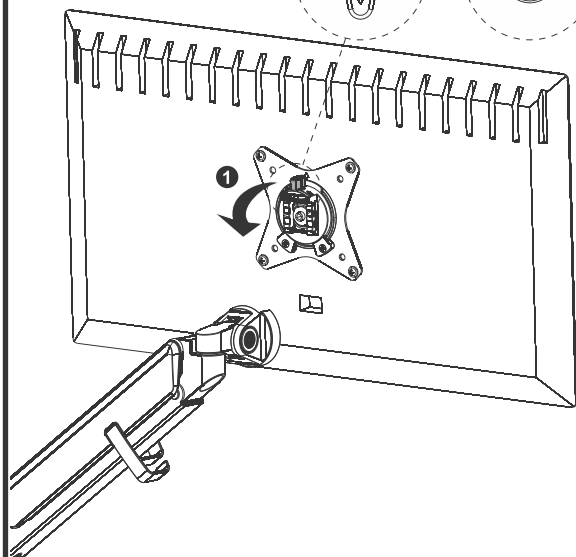


6

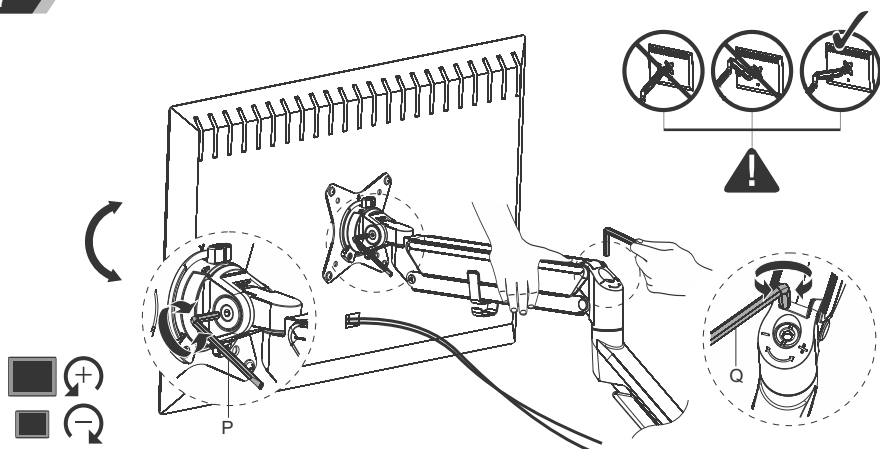


Unlock

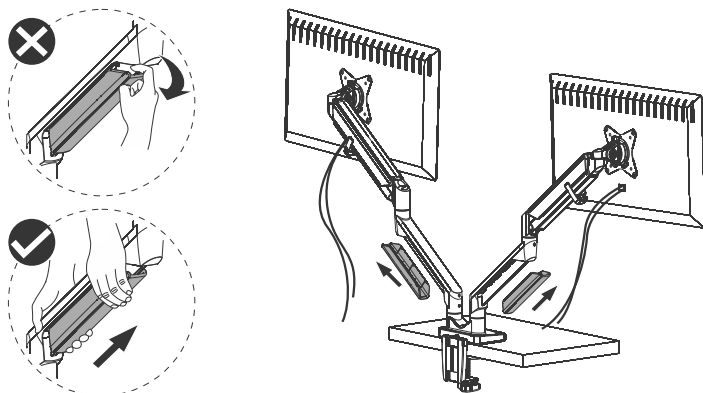
Lock



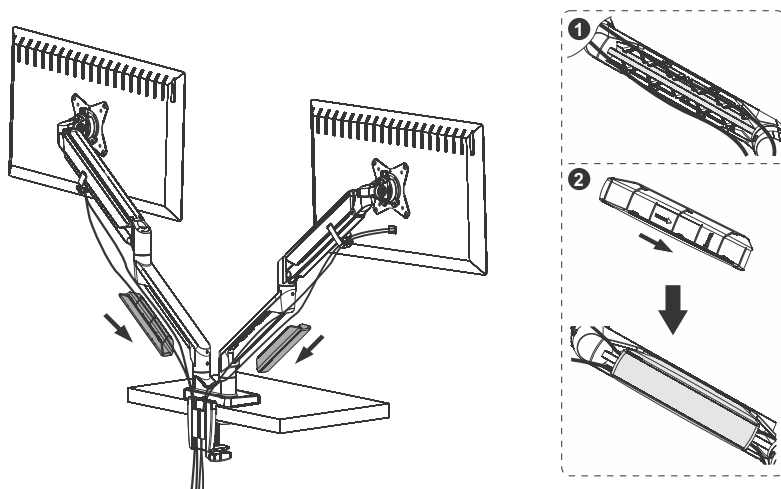
7

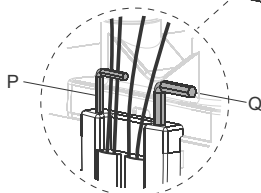
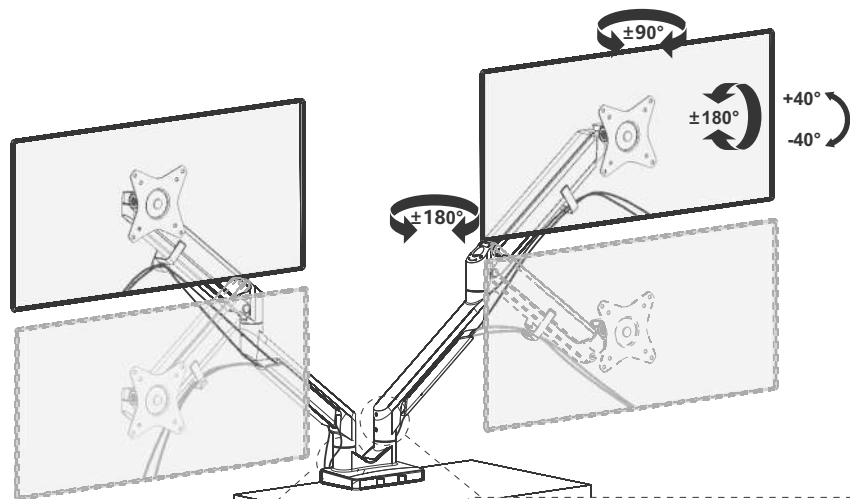


8

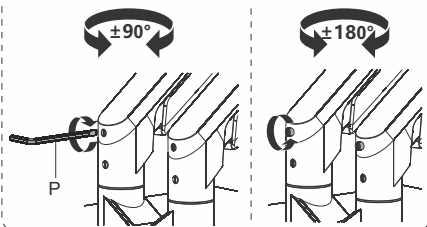


9





- Swivel range is $+90^{\circ} \sim -90^{\circ}$ with the limiting screw tightened.
- Swivel range is $+180^{\circ} \sim -180^{\circ}$ with the limiting screw removed or loosened.



Rotate the display. If the display does not stop at your desired position, tighten the screws (a) and (b) as shown.

