



This document is used to activate the
hotkeys in Windows 10 and 11 for the HV-
1683 and HV-16103W boards

Calibration and Hotkey Fix

Delian Enslin

Currently we have an issue / bug relating to the usage of the Hotkey located on the sides of the Interactive HV boards. By following the below steps, you will be able to activate and use the Hotkeys in your Teach Infinity Software. This is just a temporary work around as we are working closely with our developers to find a permanent fix.

Please ensure that you have the latest driver installed. This can be downloaded from the below link or by going to our website.

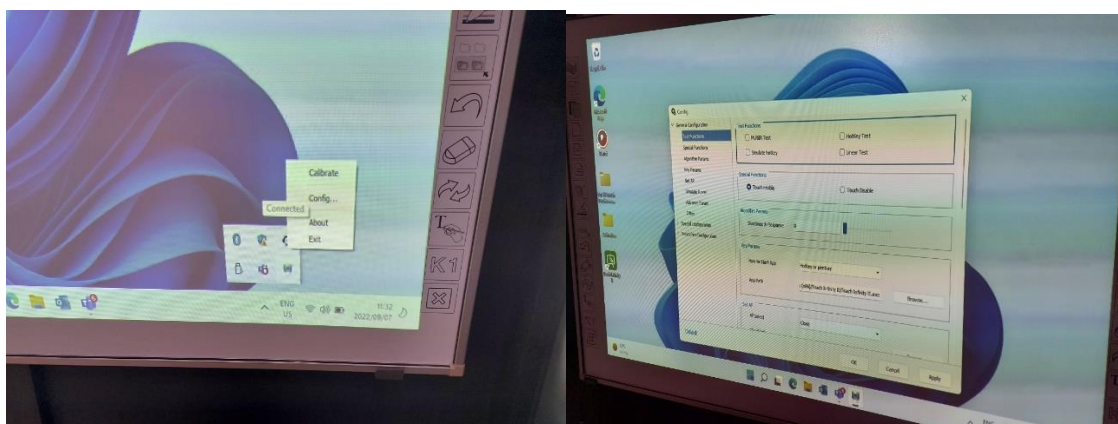
https://www.parrot.co.za/Portals/2/Drivers/Software/TeachInfinity_Driver_22.05.24.zip

Steps:

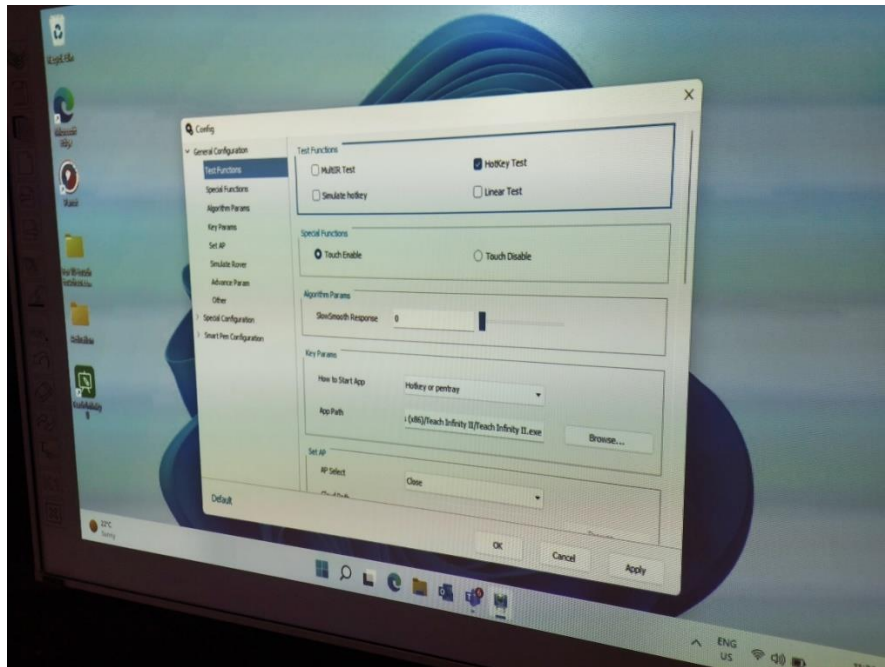
1. Click on the up arrow / pointer located on the bottom right of your screen. Here you will see the driver running



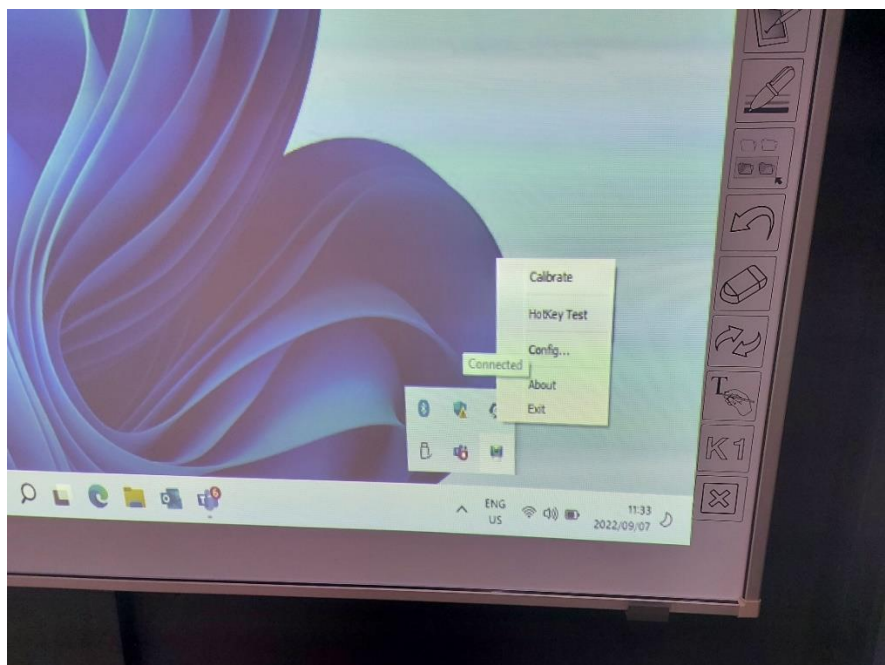
2. Right click on the driver icon – Blue screen with a green dot inside. Then select “Config” and a screen will pop up like the one below on the right.



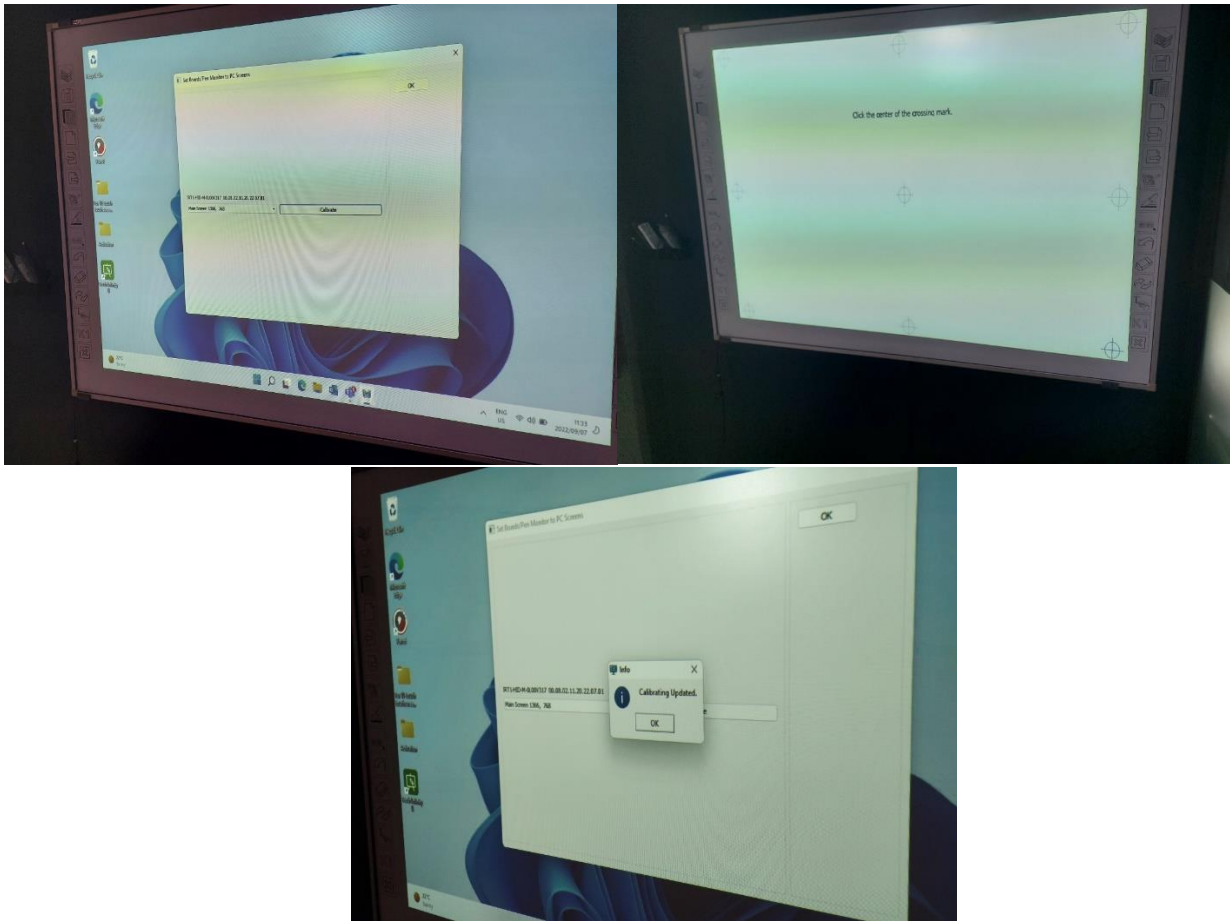
- At the top of this screen select the tick box “Hotkey Test”. And once selected please click on “Apply” and then “OK”



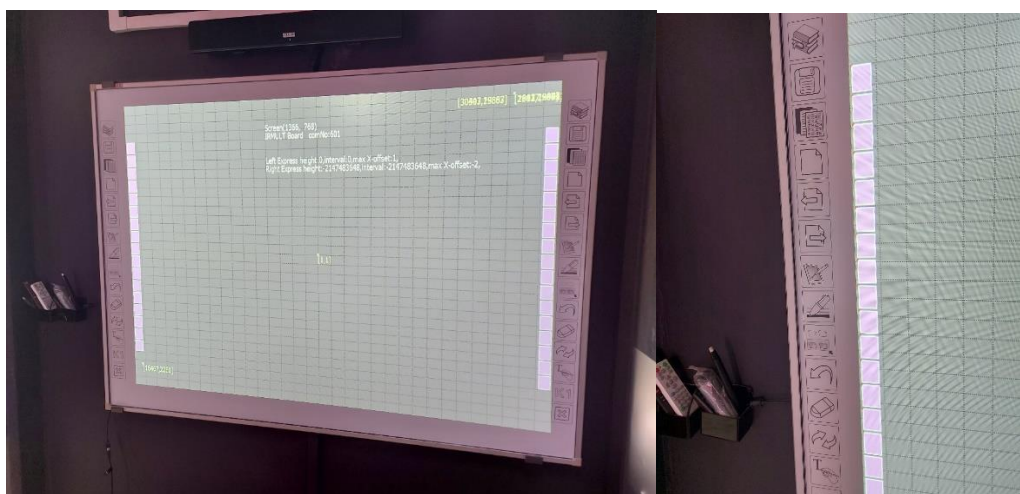
- After this has been done, go back to the driver as per step 1 and 2. You will notice “Hotkey Test” is now part of this menu.



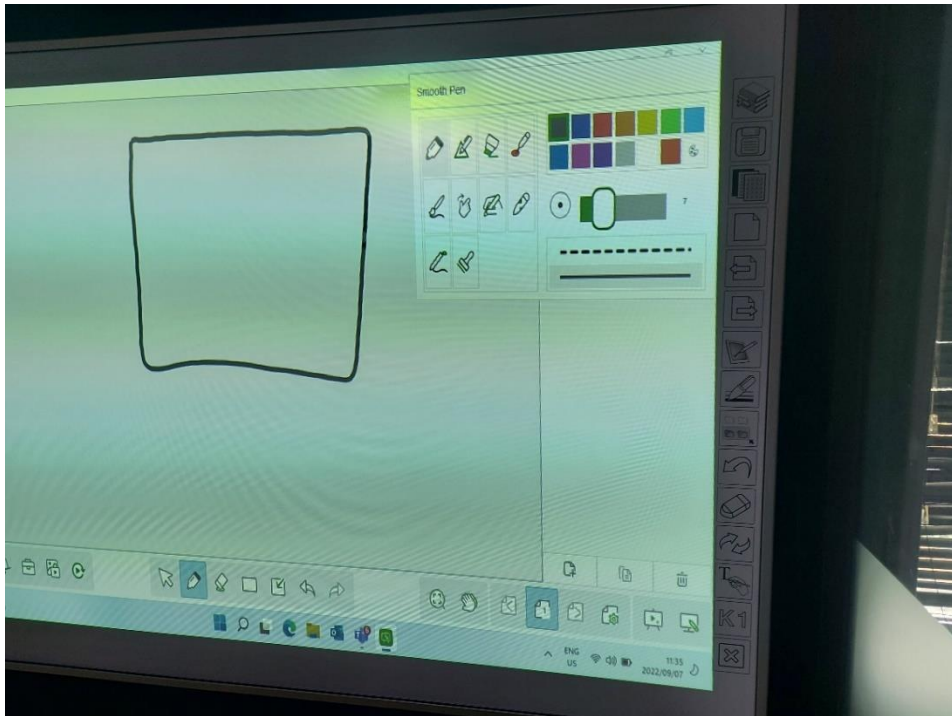
- Let calibrate the screen by selecting Calibrate and follow the prompts and press on the displayed crosshairs on the screen. Upon completing the calibration of the 9 dots you can save and close the calibration.



- Go back to right click on the driver as per step 1 and 2 and now we select "Hotkey Test". The following screen will open. One by one from top to bottom, press each of the Hotkey buttons. You will notice a small red corner adjacent to each one you press.



7. After pressing all of the Hotkeys you can press “Esc” on your keyboard. This will close the screen and you can now test and use your Hotkeys within the Teach Infinity Software.



Should you have any further queries or issues, please do not hesitate to log a ticket at pi.support@parrot.co.za for one of our Technicians to assist remotely.