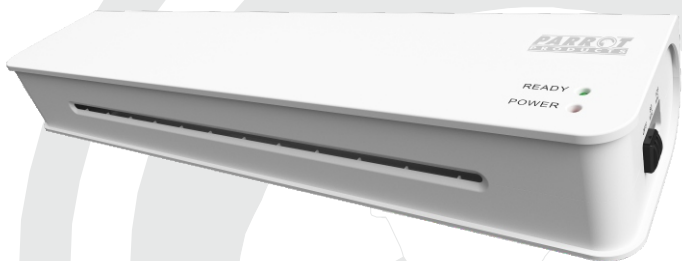




Laminating Machine 2 Roller A3 - LF9041

User Manual

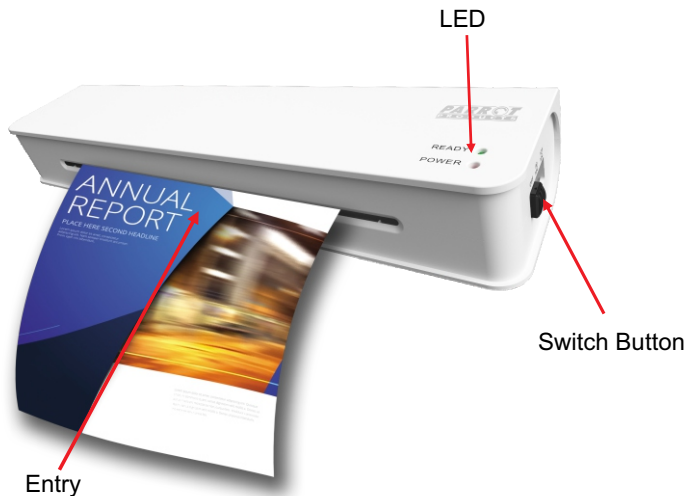


**Tel: (RSA) 010 140 4900 / Email: sales@parrot.co.za
www.parrot.co.za**

Read this manual carefully before use. Keep it safe for future reference.

Thank you for buying this high-performance laminator! This laminator features a slim and compact design. It accepts pouches ranging from 80mic to 125mic in thickness, with size from name card to A3 size.

Product Description



Specification

Voltage:	220-240V/50 Hz	Current:	1.2A
Ready time:	1.5 minutes	Entry width:	330mm
Thickness:	0.6 mm	Pouch:	80 and 125mic
Speed:	400 mm/min	Rollers:	2
Size:	470 x 100 x 60mm	N.W.:	0.9 Kg

Utility

It laminates both 80mic and 125mic thermal pouches from name card size to A3 size. To get a better lamination performance, the suitable room temperature is 18°C~25°C (namely 65°F~77°F).

Operation

POWER ON and OFF

Connect the plug to mains power, press the rocker switch to turn on the machine. The Power LED will turn red. If you press rocker switch to "Cold" position, the machine is under cold lamination status. If you press rocker switch onto "Hot" position, the machine is under hot lamination status for thermal pouches.

To turn off this laminator, press switch button back to "Off" position, power will be cut off and laminator is shut off.

THERMAL LAMINATION

To laminate the document, you would have to wait for about 1.5 minutes until the Green Ready LED turns on. Then place the paper into a laminating pouch, and insert the pouch through the laminator entry. The sealed edge of the laminating pouch should always be inserted first.

Note:

During the lamination process, the "READY LED" may go out, it will not influence lamination.

Clear the Jammed Pouch

This laminator is designed with creative anti-jamming structure. Normally speaking, the pouch would not be jammed inside. In case a mis-feed occurs, first turn off the laminator, and then pull the pouch out by hand.

Maintenance and Warning

1. To clean or move around, make sure that this laminator is turned off.
2. Do not laminate dirty pouches, clean it before lamination.
3. Do not use this laminator in damp conditions.
4. Do not laminate anything that is more than 0.6mm thickness for best seal.
5. Do not laminate heat sensitive paper.
6. This laminator should only use power 220-240V/50Hz and be used indoors only.

NEVER OPEN THIS LAMINATOR WHILE IN USE

Warranty

This product comes with 2 year limited warranty