



Graphics Tablet Wireless - GT1060W

User Manual



Tel: (RSA) 010 140 4900 / Email: sales@parrot.co.za
www.parrot.co.za

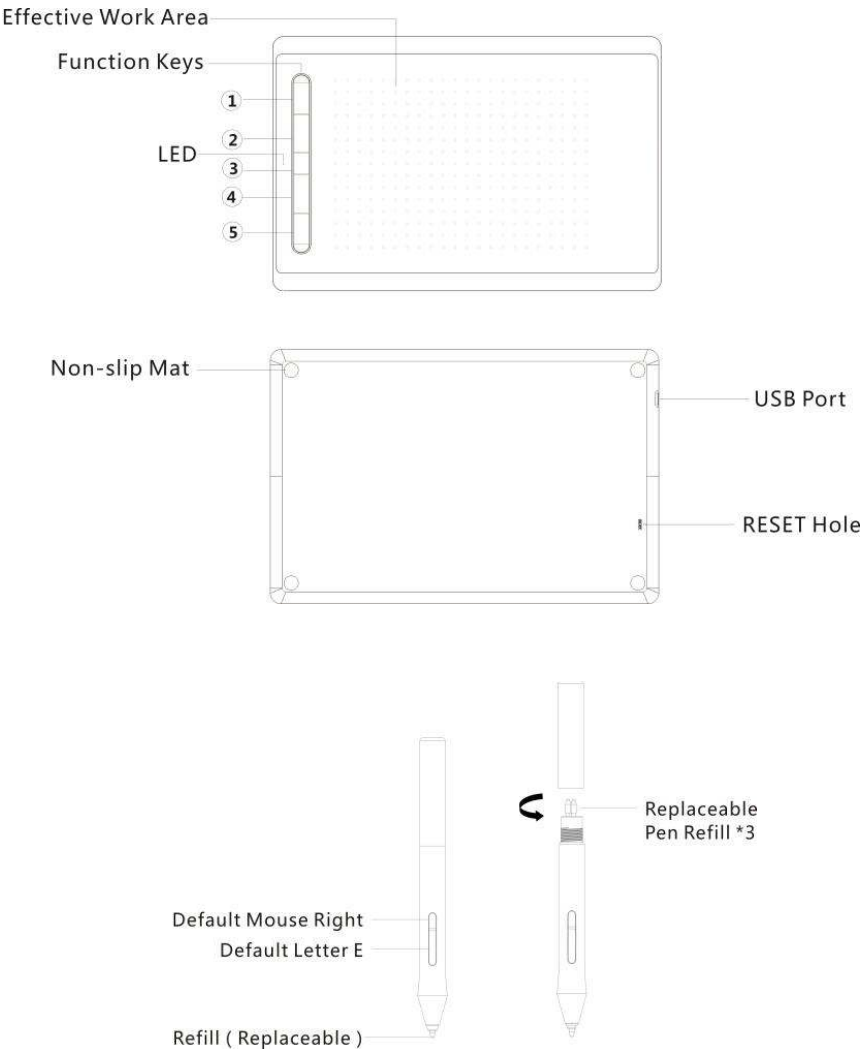
Product Function

This product has the function of handwriting input and pressure induction, with teaching software, it can be applicable to online teaching and to drawing software.

The handwriting changes in thickness with the control of pressure applied by the digital pen.

It simulates the strokes of pencils, markers, watercolours, brushes and oil brushes. Applicable to mobile phone tablet drawing software.

Also applicable to mobile phone eDraw APP achieve synchronous drawing, handwriting, playback, etc.



Tablet

Powering ON / OFF

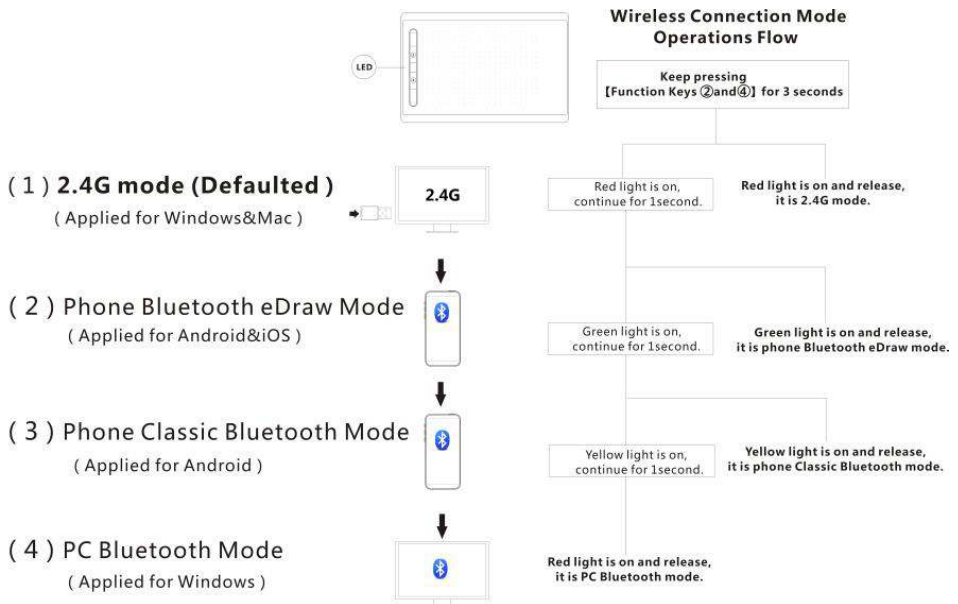
To **Power ON**: Click the [ANY KEY] on the tablet to power on, at this time the green indicator flashes. Please wait until the current status always on, then you can start using the tablet.

When USB is connected during work, the yellow light turns ON. If the 2.4GHz wireless receiver or bluetooth connection is on, the green light turns ON

To **Power OFF**: Long press [Function key] (3) on the tablet for three seconds to shut down. When USB cable is connected, please remove this USB data cable first, the long press to shut down.

Tablet Connection Mode

1. Wired mode: Connect directly with USB data cable
 - Once USB data cable is connected to the computer, the wireless mode will be invalid.
 - Mac Os is not supported without driver installation, plug and play compatible with Windows OS.
2. Wireless mode: There are 4 modes, 2.4G is the defaulted mode
 - First remove the USB data cable.
 - Adjust as below:



- Wireless mode automatically switches to wired mode when a USB data cable is plugged onto the computer.
- Wireless connection mode switch must be in the boot state if no USB data cable is connected.
- After successful mode switch, the current Setting will be saved, no need to adjust to this mode again the next time you power the tablet on.
- Phone classic Bluetooth mode: iOS is not supported.

PC Bluetooth Mode: Under Driver Free, do not support Mac system, only support windows system and the screen is 16:9

Window Driver-free Online Teaching

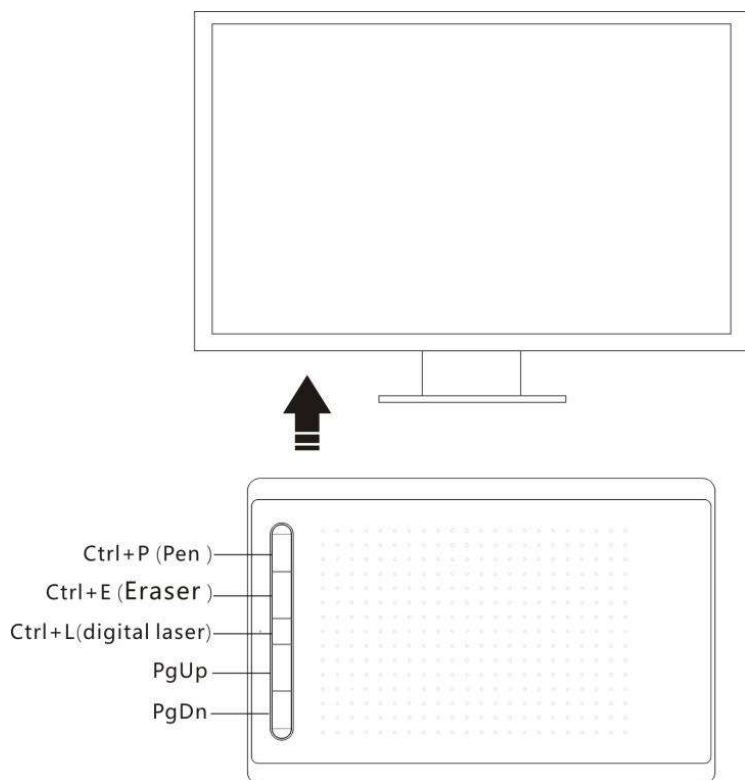
Connection mode: USB data cable, 2.4G, Bluetooth

System requirement: Windows 10 and part windows 7

Use Mode: No need to install the Graphic Tablet driver.

Connect to the computer and click [ANY KEY] on the tablet to power on, the green light starts flashing.

Please wait until the current status indicator is always on, then you can start using the tablet, For example, support Microsoft Office PowerPoint full screen play Ctrl+P (Pen), Ctrl+E (Eraser), Ctrl+L (Digital Laser) and page up or down function.



- PowerPoint full screen play and Digital laser only supports PowerPoint 2013 and above.
 - When pairing your computer with bluetooth, please click GT1060W in the list to connect.
- When connecting to Blue tooth for the second time, you need to delete the device from the paired list and search for the connection again.

Graphics Tablet Driver Quick Guide

Connection mode: USB data cable, 2.4G.

System requirement: Windows 7 or above Mac OS 10.0 or above.

How to download and instal the Driver

Download the driver graphics tablet through the link below:

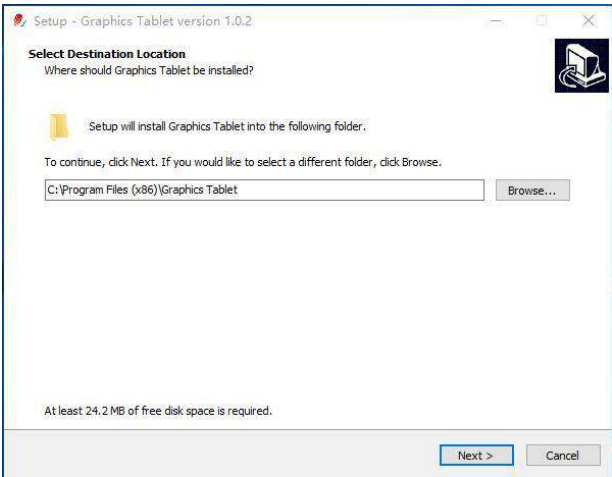
<http://25.myvsoncloud.com>



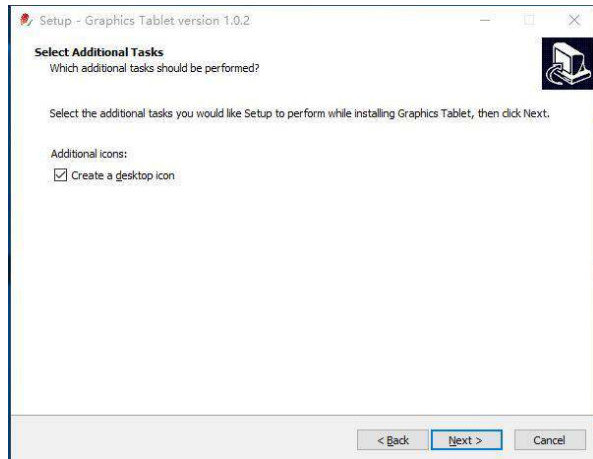
Windows installation:

- Please make sure that there is no other brand graphics tablet driver in the computer.
If you have installed other graphic tablet on the computer, you must first:
uninstall the driver, restart the computer and then instal the driver of the graphic tablet
to avoid driver conflicts.
- Close all painting software and anti-virus software before installation.
- Double-click to run the driver, and click next step in turn according to prompt.

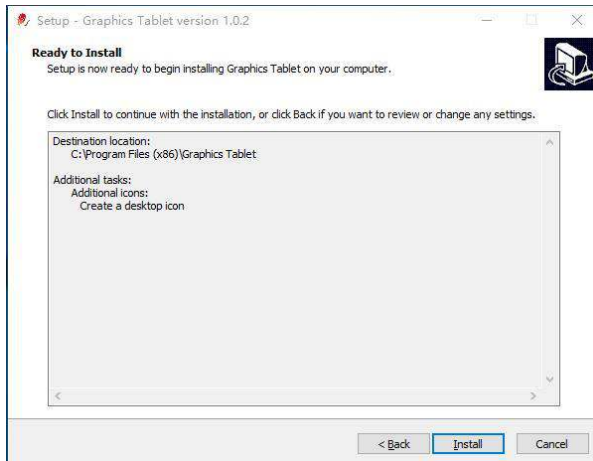
1. Click “Next”



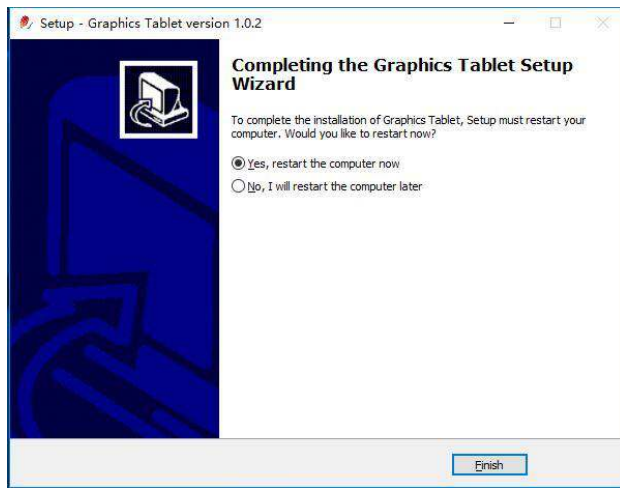
2. Click “Next”



3. Click "Next"



4. Click "Finish"

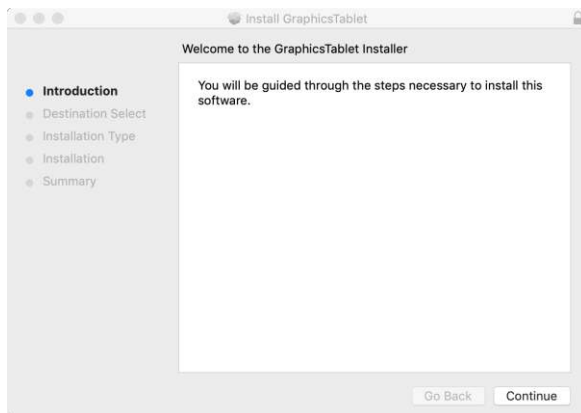


Restart the computer when the driver is installed.

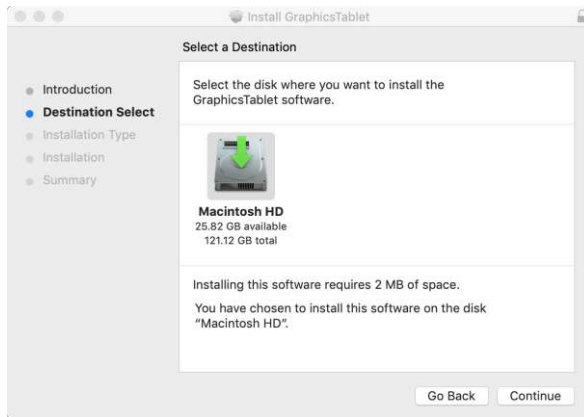
Mac installation:

- Double-click to run the driver on your download file and click next step in turn according to the prompt. Then Go - Applications here is graphic Tablet Driver.

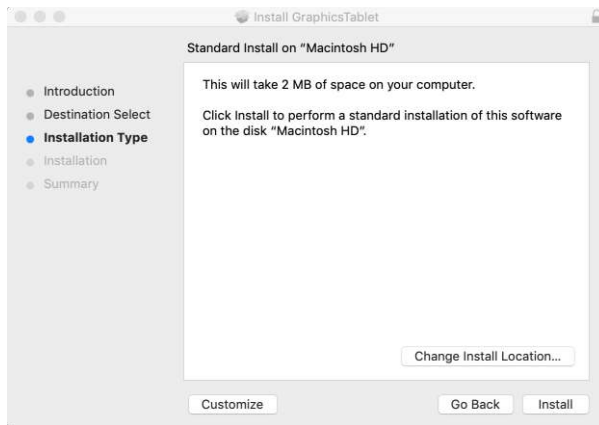
1. Click "Continue"



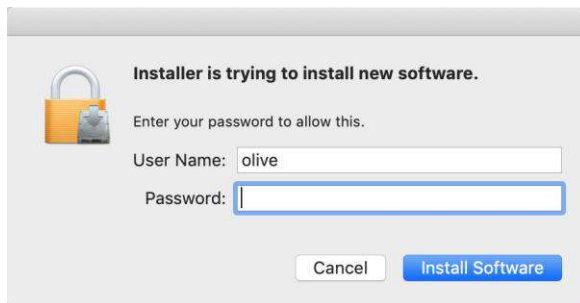
2. Click "Continue"



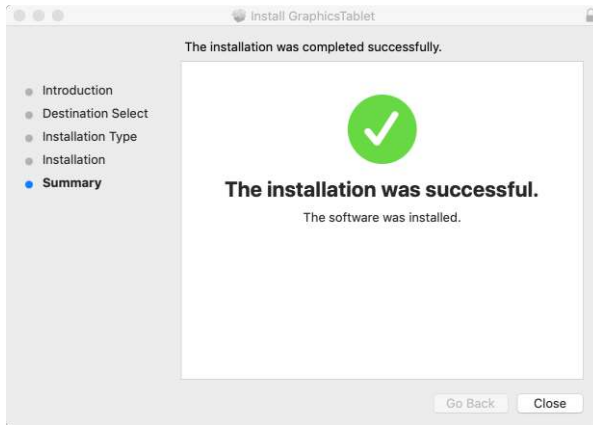
3. Click "Next"



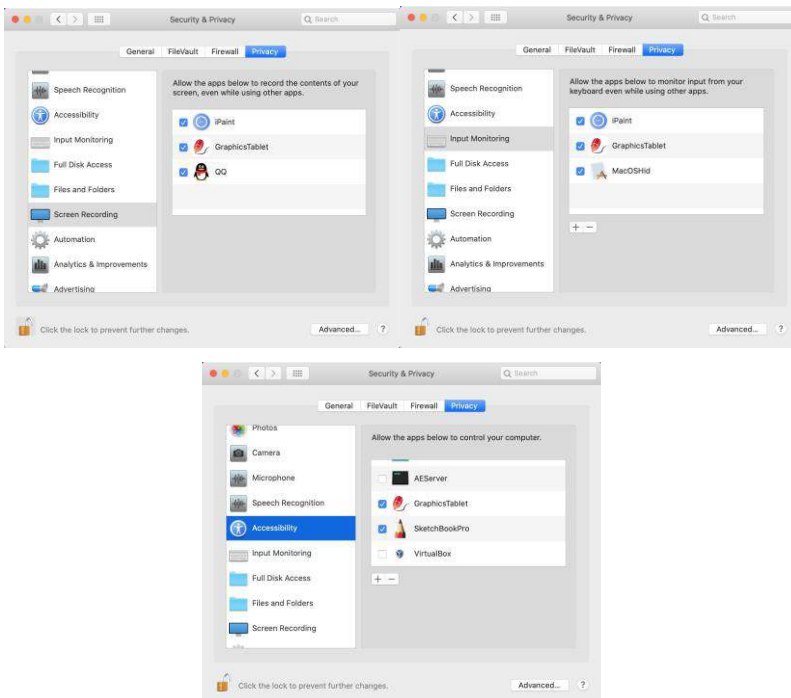
Enter your Password, then click the "Install Software"



4. Click "Close"



Please check the System Preferences - Security Privacy - Privacy-Screen Recording/Input Monitoring / Accessibility and allow Graphics Tablet to control your computer



- Just install the driver with guidance of default prompt. Do not change any settings to avoid any errors during installation.
- During installation, the process might get blocked by firewall for a few times, Please choose "install this program software" to continue.

How to Connect

Connect to PC

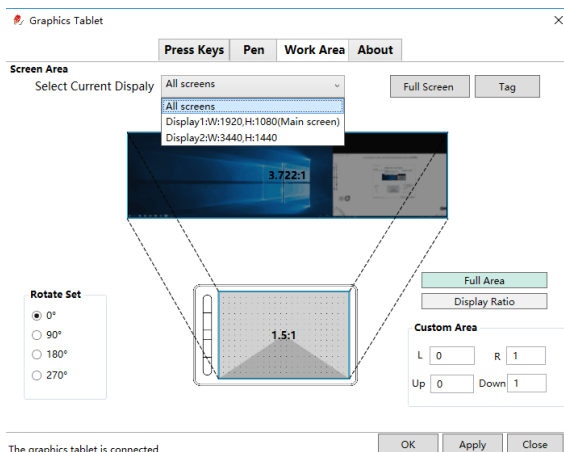
- **Wired Connection:** Connect to the tablet and computer with the USB data cable.
- **2.4G Connection:** Factory default 2.4G mode;
You can also long press the 2nd and 4th buttons on the tablet for 3 sec, the red light on the left on and let go, enter 2.4G mode, then plug the USB receiver into your computer.
- The green indicator will start flashing, please wait until the current status indicator to be always on, and the icon in taskbar will become colorful from grey when the connection is established.
The driver interface displays "The graphic tablet is connected".
- The graphics tablet can be used normally.
- Be sure to connect the graphic tablet to the computer after the driver is installed, so to avoid driver installation delays or errors during the identification of the hardware.
- If using a desktop computer, the Graphic tablet USB cable should be plugged into the USB port on the back of the tower not on the Ports from the front tower.
- If the driver is not responding, try to restart the device by inserting a pin into the RESET hole for 3 seconds.



Windows Settings

The operation procedure in Mac is similar to that in windows

Work Area Settings

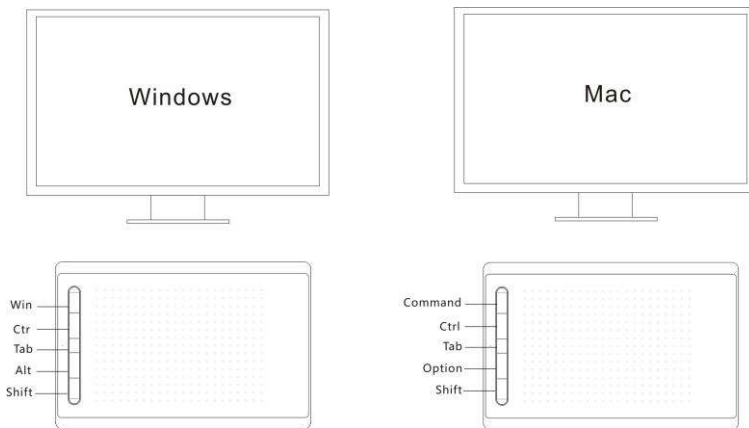


- Work area is the effective working area of handwriting on the tablet which corresponds to the mouse cursor working area on the monitor of computer.
- If there are more than one monitors connected, tablet can reflect on each monitor in a mirror mode.
- You will have to select the monitor where you want to display tablet in extended mode.

- **Display Ratio:** it is the effective handwriting area on the tablet is in the same ratio with the monitor but some area on the tablet may be out of work. If you draw a circle in working area, it will display a circle on the monitor.
- **Full Area:** It refers to the total work area of the tablet usable. If the ratios are different between monitor and tablet, it may display an oval when you draw a circle on the tablet.
- **Rotate Set:** You can set the way to place your tablet according to your need.

Press Keys Settings

- **Default Hot-Keys:** Windows and Mac default hot-keys are different, as show below. Press the button on the tablet and the computer displays the shortcut value.
- You can also view the default hot-keys of the hardware key by placing the cursor on the key or clicking the key icon.



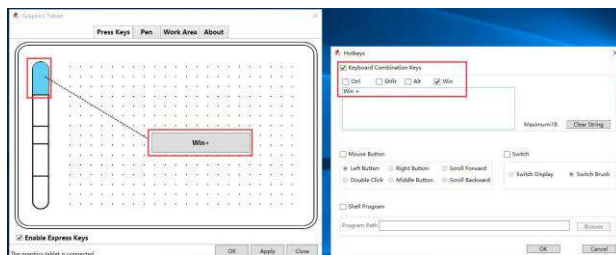
Customize the function of shortcut keys

- Click one key to enter the "Hot-keys" window as below. Set its function or select one as you want, then click "Ok" to save the setting.

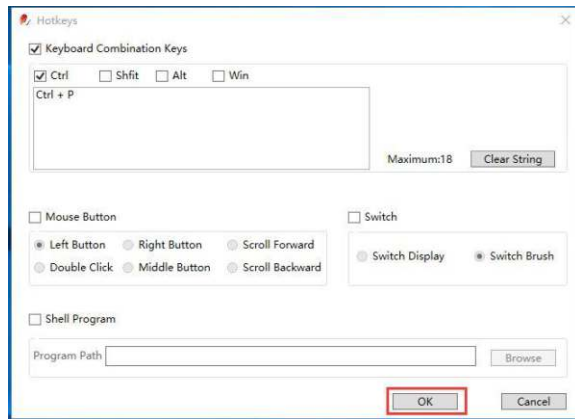
Example: Ctrl+P is the function in PowerPoint full screen play.

If you need to set "Win+" to "Ctrl+P", please follow the below steps.

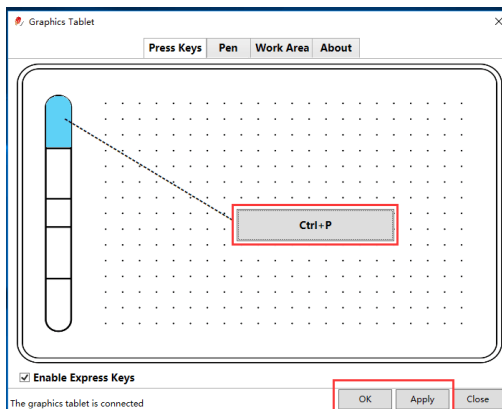
Click "Win+" and enter the hot-key setting interface, it defaults Win.



Select "Ctrl" and input the letter "P", then click "OK"

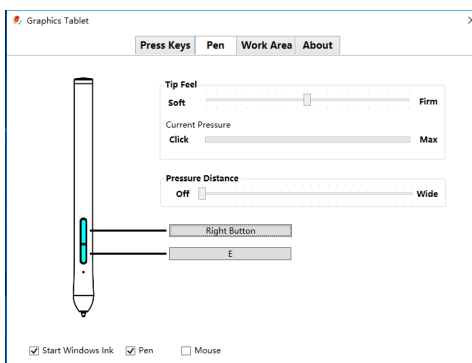


Click "OK" or "Apply" to take effect the hot-keys.



- Switch: It can help you to switch frame among multiple monitors.
- Shell: Add an application program in it, you can run the application quickly by pressing the short key.

Pen Settings



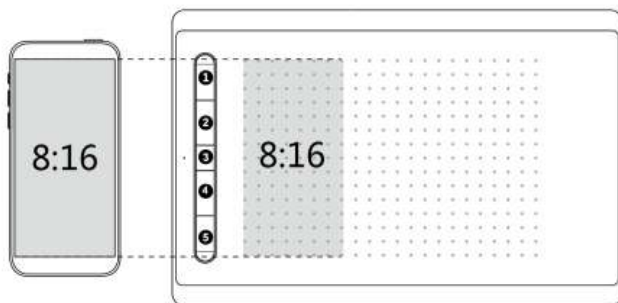
- The default functions are letter “E” and the right button of the mouse, their function can be customized.
- Under pen mode, the mouse cursor’s location on the screen is the position of the pen. It will move with the pen moving on the working area of the tablet, this is the default setting.
- Under mouse mode, the pen can be used as the mouse.
- Tip Feel: Adjust the pressure sensitive between the pen and tablet.
- Current Pressure: Test the pen pressure value.
- Pressure Distance: Adjust the sensitive distance between the pen and the tablet. It is easier to double click with wide distance.
- Start Windows Link: This function is used with drawing of office software, such as Adobe Photoshop, Sketchbook, Microsoft Office, etc.

About

- Import / Export: You can import or export your settings convenient for you to set the product with different software.
- Default Setting: Back to the original settings.

Phone Quick Guide

- Connection Mode: USB data cable, Classic Bluetooth.
- System Requirement: Android 6.0 or above.



User Method

- Graphic tablet can be used with mobile phone without installing driver.
- Please use the portrait screen for mobile phones and place the tablet horizontally.

Connection Method

USB data cable connection: Some models need to go to the settings of mobile phone, turn on the OTG function. Please select the appropriate OTG adapter according to the type of interface of your phone. Connect one end of the OTG to the USB data cable and insert the other end into the phone interface. The left half of the digital board will automatically correspond to the proportion of the phone (as per above image).

Classic Bluetooth connection: Adjust to Classic Bluetooth mode and turn on phone bluetooth. For Classic Bluetooth pairing, please click on the GT1060W in the device list to pair up. The left half of the graphic tablet will automatically correspond to the proportion of the phone (such as above image).

eDraw APP Quick Guide

- Connection Mode: Bluetooth.
- System Requirement: Android 6.0 or above and iOS 9.0 or above.

Download and install “edraw” APP on your mobile phone

- The user can scan below QR Code or search “edraw” in App store/Google Play to download.



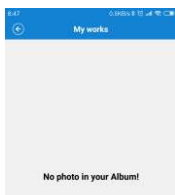
Bluetooth Connection is as follows:



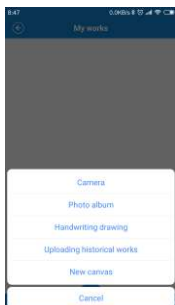
- Turn on your phone Bluetooth and network, set connection mode to bluetooth eDraw App mode.



- Choose Equipment: Open the “eDraw” App, Click the Menu bar “Equipment” to “iDraw”



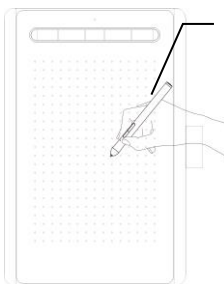
- New your work: Click “+” to add your works.



- New Handwriting drawing:
Click "Handwriting drawing"



no



Note:
Place the tablet
horizontally and
button is upwards

New canvas:

- Connect the device: "eDraw" APP will automatically scan the device (device name: GT1060W). After successful connection, Draw on the tablet, meanwhile it synchronizes on this drawing board.

Pen

- Hold the pen the way you would normally hold it and then rotate it to adjust the position of your finger until your thumb or fore-finger can easily press the pen shortcut, be careful not to miss the button when using the pen.

Note: When not in use, please put the pen on the desk, do not put the pen on the tablet, otherwise it will interfere with the use of the mouse and other devices, may also cause your computer to not enter sleep mode.

Pointer Movement

- In the effective working area of the tablet, the mouse cursor can be moved to any position on the corresponding screen directly by the movement of the pen, if beyond the working area, invalid

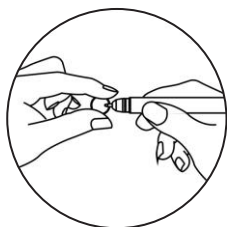
The tip double-click

- Double-clicking the pen on the working area of the tablet is equivalent to double-clicking the left mouse button. After touching the pen for the first time, please do it again as soon as possible in the shortest time.

Drag

- Do not release the icon or file when the nib selects it. Swipe the nib on the screen to move the icon or file to a specified location.

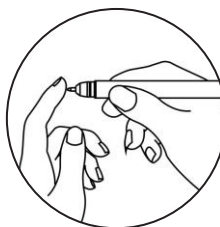
Replacing the pen refill



Take out the clip from the accessories; hold the pen tip and pull out.



Take out of the new clip from the accessories; insert it to the pen till suitable position.



Charging

Charge for Tablet

- In power off mode and connect one end of the USB cable to the tablet charging port, the other end to the PC. The red indicator light stays on when charging, light will go off when tablet fully charged.

Note:

- Please only charge when the red indicator starts flashing indicating that the battery is low.

Caution:

- Do not disassemble, impact, or put it into fire
- In case of severe bulging, please do not continue to use
- Do not expose to high temperature environment

Specifications:

- Tablet Dimension: 325*213*11mm.
- Work Area: 210*140mm.
- Tablet Capacity: 1000mAh.
- Input: 5V --- 1A.
- Charging Time: About 3-4 Hours.
- Available: About continuously use for 7 hours.
- Pen Dimension: 142*14mm.
- Connection Type: USB data cable, 2.4G, Bluetooth.
- Touch Technology: Passive electromagnetic induction.
- Sensor Height: 10mm.
- Pressure Level: 8192 Levels.
- Read Resolution: 5080LPI.

Q&A

Abnormal Occurrence	Solution
The tablet doesn't work.	<ul style="list-style-type: none"> • Make sure the tablet is powered. • Make sure the connection mode is right. • Make sure the driver is installed correctly, otherwise please reinstall the driver. • Reconnect the USB data cable or replace the USB interface.
The Pen doesn't work.	<ul style="list-style-type: none"> • Make sure that the pen you are using is compatible with the product. if not, please follow the pen calibration method before using. • Make sure the driver is installed correctly.
Keyboard shortcuts don't not work.	<ul style="list-style-type: none"> • Make sure the shortcut function is enabled in the driver, and click ok or apply. • Ensure the correct definition of key functions.
No pressure in the drawing software.	<ul style="list-style-type: none"> • It is possible that you have another brand of digital board driver on your computer, or that you have the drawing software open during installation and the files are not installed correctly into the system directory. • Please uninstall other brands of digital board driver and close the drawing software and re-install the driver. After driver installation, open the drawing software for use.
Computer can't go into sleep mode.	<ul style="list-style-type: none"> • Please do not place the pen on the surface of the tablet out of use, this will keep the tablet awake.
Pen keys are not working.	<ul style="list-style-type: none"> • When pressing the pen button, please make sure that the pen tip. touch the tablet surface, and the distance between the tip and the. tablet surface is within 10mm.
Why Photoshop CS6 is not available in Win10.	<ul style="list-style-type: none"> • Uncheck Windows Ink in the driver and restart PS CS6 software. • The version above PS CS2018 is recommended.