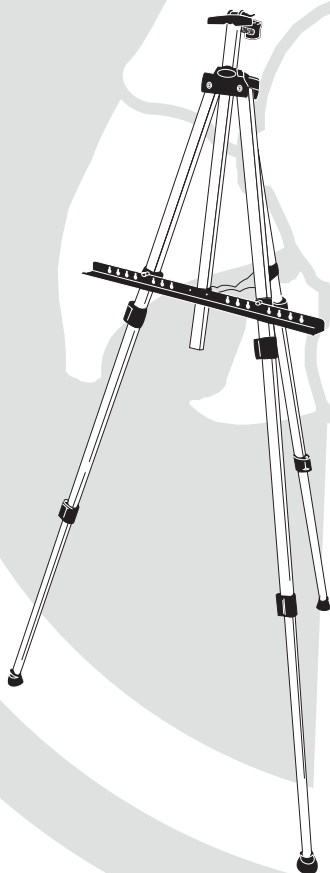




Aluminium Adjustable Easel

BD9135
User Manual



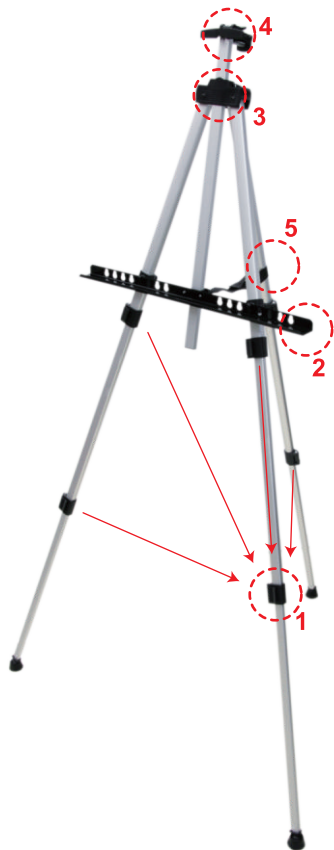
Tel: (RSA) 010 140 4900 / Email: sales@parrot.co.za
www.parrot.co.za

Specifications

Folded Height:	530 mm
Maximum Operating Height:	1570 mm
Minimum Operating Height:	520 mm
Net Weight:	0.7 kg
Colour:	Black & Silver
Maximum Media Width/Height:	800mm
Material:	Aluminium
L x B x H:	550 x 120 x 80 mm

Caution

- Ensure that all parts are included in the packaging.
- Read the instructions carefully before beginning the assembly procedure.



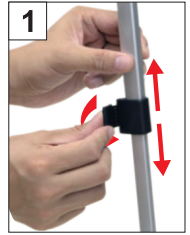
Parts:

- 1 - Telescopic Leg Clips
- 2 - Canvas Support Tray
- 3 - Center Bar
- 4 - Upper Canvas Support Clip
- 5 - Leg Support Strap

Assembly instructions

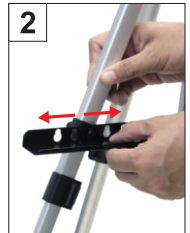
Step 1:

- Loosen the clips ① to extend the easel's legs to the required height.
- When the legs are at the required height, fasten them by pressing the clips down.
- **Ensure easel is level before use.**



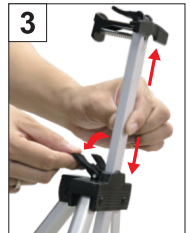
Step 2:

- Secure the canvas support tray ② onto each front leg
- Ensure canvas support tray is level before use.



Step 3:

- Loosen the clip on the center bar ③, and extend to the required height.
- When the upper canvas support clip ④ is at the required height press the clip down to secure your canvas.



Step 4:

- To secure your canvas, press the upper canvas support clip ④ on the indicated area.



Step 5:

- To avoid any movement or instability, use the black strap ⑤ to secure the back leg to the canvas support tray ②.



