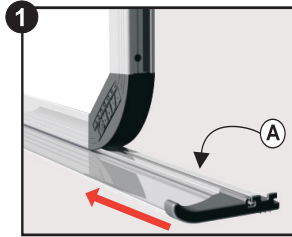
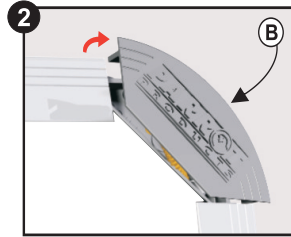


Mounting Instructions for Aluminium Frames

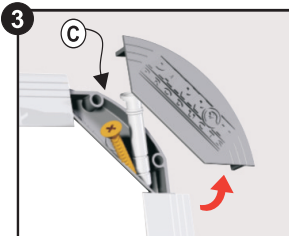
Slimline and Standard Frames



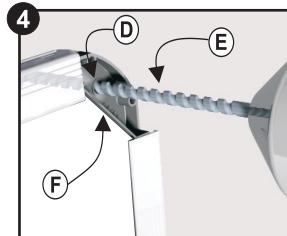
1 Slide pen tray (A), packed at the back of the board of Standard Frames, into the frame groove, landscape or portrait as required.



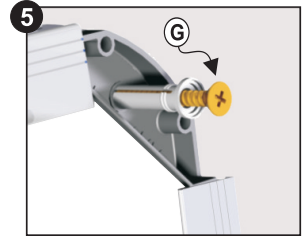
2 Remove plastic corner caps (B) from the frame by lifting.



3 Remove the Tru-Fix screws (C) from underneath the corner caps.

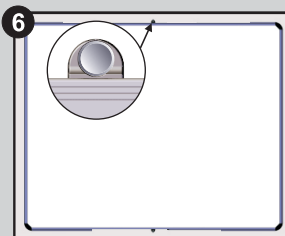


4 Note the marked area (D) for drilling. Use a 6mm drill bit (E) to drill through the back of the corner mould (F) and into the wall.

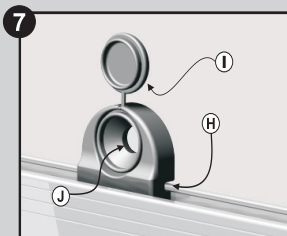


5 Hammer wall plug and screw (G) into position. Take care not to damage corner mould or frame - Replace corner cover.

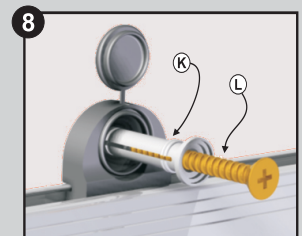
For boards 1800mm and larger, see steps 6, 7 & 8



6 2 Mounting brackets packed with pen tray at back of board. Space mounting brackets equally apart (recommended) centre to board, top and bottom



7 Slide Mounting bracket (H) onto frame. Open cover (I) of mounting bracket. Drill through the hole (J) in the Mounting Bracket.



8 Place wall plug (K) into hole. Place the screw (L) into the wall plug. Hammer the screw and plug until flush and close mounting bracket cover.